





# TABLE OF CONTENTS

## REHABILITATION AIDS

Foldable cane	10
Tripod cane	11
Quadruped cane	12
Elbow crutches VCBP00	13
Elbow crutches VCBP0042 model PU	14
Elbow crutches VCBP0042 model UC	15
Armpit crutches	16
Fix walker	17
Wave walker	18
Dual walker	19
Wheeler walker	20
Bola walker	21
Carter walker	22
Tripla walker	23
Alex rollator	24
Alex Light rollator	25
Ambona rollator	26
Tom rollator	27
Billy rollator	28
Frank rollator	29
Edi rollator	30
Rocky rollator	31
Rocky Basic rollator	32
Grass rollator	33
Rose rollator	34
Mobilus rollator	35

## STEEL MANUAL WHELLCHAIRS

Basic, Basic Plus	38
Solid Plus	39
Forte Plus	40

## COMMUNE WHEELCHAIRS

Toilet wheelchair	42
Trust manual wheelchair with toilet function	43

## ALUMINUM WHEELCHAIRS

Feliz	45
Cameleon	46
Titanium	47
Silver	48
Platinum	49
Active Sport	50

## SPECIAL WHEELCHAIRS

Recliner	52
Recliner Plus	53
Recliner Extra	54
Premium	55
Support	56
Hero Manual	57

## WHEELCHAIRS, STOLLERS AND CAR SEAT FOR CHILDREN

Fun Baby	60
Umbrella	62
Junior	64
Junior Plus	65
Junior / Junior Plus upholstery colors	67
Promyk	68
Promyk Special	69
Baczus Relax	70
Baby Hero	71

## POWER WHEELCHAIRS

Scrubby	74
Easy	75
Limber	76
Modern	77
De Luxe	78
De Luxe Lift	79
Hero Stand Up	80
Mini	82
Rider II	83
Cruiser II	84
Way	85

## VERTICALIZING SYSTEM

PSL static parapodium light	88
PST static parapodium	89
GYM static parapodium	90
PJMP/PJM mobile parapodium	91
PJMC Combo mobile parapodium	92
PD mobile parapodium	93
GYM dynamic parapodium	94
Bingo	95
Spring / Speedy	96
Rainbow / Gato	98
Samson	100
David	101
Capri	102

## ANTI BEDSORE AND SANITARY AID

Rest anti-bedsore pneumatic cushion	104
Comfy anti-bedsore pneumatic cushion	105
Anti-bedsore mattress	106
Bubble Master	107
Anti-bedsore mattress	108
Tube Master	109
Tube Light	110
Back Support	111
Bath bench	112
Bath bench	112
Blu shower stool	113
Small shower stool	114
Shower stool	114
Shower Seat	115
Commode Chair	116
Raised toilet seat	117
Raised toilet seat	118
Raised toilet seat	119

## EXERCISERS

Genesis rotor	121
Genesis Plus rotor	122



Customers dreams,  
safety and convenience  
are the determinants  
of the quality our products.  
Cooperation  
with us guarantees  
business success for every  
partner.

**W**e have been offering modern medical solutions in the field of orthopedics and rehabilitation for several years. We are inspired by people, their dreams and needs, they create indicators of the quality of our products. We are proud to create products for people who find it harder to achieve their goals and yet do not give up. Their strength is a drive for our development.

We also care about partner relationships and the interests of our clients. Professionalism in every field is a key determinant of our activities. We are at your disposal in the field of comprehensive commercial and consulting services.

MDH Sp. z o.o. Team

**O**ur business activity is visible in many operations such as production, import, export and distribution. We're producer of medical and support footwear, orthopedic articles, the manufacturer of rehabilitation equipment. The company's business consists in the sale of own products, execution of the exclusive agreements for the sale of worldwide known brands in Poland and Europe, active cooperation with several hundred medical stores located in Poland, as well as export of private labels brands to different countries and leading worldwide companies. For the last few years mdh has successfully developed its export sale to Ukraine, Slovenia, Czech Republic, Belarus, Croatia, Romania, Italy, Bosnia & Herzegovina, Bulgaria, Spain, Colombia, Turkey, UAE. Many products owned by our company have been granted patent protection in the European Union, USA, Canada, Japan or South Korea. All our products are manufactured from high quality materials and conform to the required safety standards. Our team of constructors supervises

product quality and constantly develops the products in line with the latest technological achievements and recognised medical expertise supported by research, thanks to which we are able to offer medical equipment, which addresses market demand in terms of its functionality and design, as well as complies with the global trends in medical sector. This is confirmed by the implemented quality management system which conforms to ISO 9001:2008 standard and requirements of EN ISO 13485:2003 standard, that can be used by manufacturers and distributors of medical devices for the design and development, production, distribution and servicing of orthopaedic and rehabilitation devices. Our company's motto is "We set the world in motion", which means we do our best to help patients with movement disorders and we actively commit ourselves to commercial activities addressed to our Customers. Professionalism is a key feature of all our business activities. Constant development of our company is confirmed by many awards.

## VITEA CARE

**V**itea Care is a group of products developed for a broadly defined rehabilitation - both functional and social - which are tailored for patients with limited mobility. Thanks to proven quality and constant development of innovative technical solutions, Vitae Care products improve the comfort of everyday activities, allow patients to participate in social life more fully, as well as prevent consequences of immobilization. Vitae Care equipment is helpful at all stages of physical performance recovery. Rehabilitation and auxiliary products line comprises: bedsore prophylaxis and treatment products, wheelchairs of different standards and functionalities, sanitary aids and rehabilitation aids. This brand consists also of the products for children.

[www.viteacare.com](http://www.viteacare.com)

## ORTOPEDIA

EINE MARKE VON MEYRA

**O**rtopedia eine marke von Meyra is a part of the MEDORT group, which manufacture active wheelchairs. They are designed for patients having precise requirements in terms of the wheelchair parameters. Wide range of adjustable parameters, such as seat width and height, or seat angle, allows for adaptation of the product to individual needs of its user. All wheelchairs are designed to be even more comfortable and user-friendly.

[www.ortopedia.meyra.pl](http://www.ortopedia.meyra.pl)





**mobilus**  
LITE



# REHABILITATION AIDS



# FOLDABLE CANE

catalogue no. **VCBP0022**

## PRODUCT CHARACTERISTICS:

- aluminum structure
- folds down into 4 parts
- packed in case
- height adjustment every 2,5 cm
- available in black color

## USE:

Walking aid which improves stability and maintains upright ambulation.



**folds down  
into 4 parts**



**ergonomic  
handle**



**anti-slip  
protection tip**



Height (cm)  
80 - 90



Weight (kg)  
0,35



Maximum capacity (kg)  
100

# TRIPOD CANE

catalogue no. **VCBP0024**

## PRODUCT CHARACTERISTICS:

- made of aluminum (base made of steel)
- three support points finished with non-slip rubber tips
- anatomically profiled handle
- suitable for both left- and right-handed people
- gradual height adjustment every 2.5 cm

## USE:

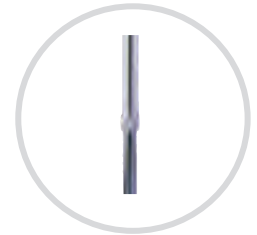
Walking aid which improves stability and maintains upright ambulation.



**3 anti-slip  
protection tips**



**ergonomic  
handle**



**gradual height  
adjustment  
every 2.5cm**



Height (cm)

73,5 - 96



Weight (kg)

0,7



Maximum capacity (kg)

100

# QUADRUPED CANE

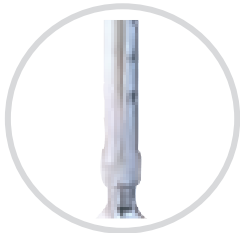
catalogue no. **VCBP0021**

## PRODUCT CHARACTERISTICS:

- made of aluminum (base made of steel)
- four support points finished with non-slip rubber tips
- anatomically profiled handle
- suitable for both left- and right-handed people
- height adjustment every 2.5 cm

## USE:

Walking aid which improves stability and maintains upright ambulation.



**height adjustment**  
every 2.5 cm



**ergonomic**  
handle



**4 anti-slip**  
protection tips



Height (cm)  
73,5 - 96



Weight (kg)  
0,8



Maximum capacity (kg)  
100

# ELBOW CRUTCHES

catalogue no. **VCBP0042**

## PRODUCT CHARACTERISTICS:

- made of aluminum
- reflective element
- height adjustment every 2.5 cm
- available in colors: black, blue

## USE:

Walking aid which improves stability and maintains upright ambulation, especially useful when an injury or disability affects one leg only.



reflective element



anti-slip protection tip  
and single-point height  
adjustment



Height (cm)

99 - 119



Weight (kg)

0,56



Maximum capacity (kg)

140

# ELBOW CRUTCHES

catalogue no. **VCBP0042 model PU**

## PRODUCT CHARACTERISTICS:

- made of aluminum
- 2-point height adjustment
- available in black color

## USE:

Walking aid which improves stability and maintains upright ambulation, especially useful when an injury or disability affects one leg only.



**anti-slip  
protection tip**



Height (cm)  
86 - 116



Weight (kg)  
0,50



Maximum capacity (kg)  
100



## ELBOW CRUTCHES

catalogue no. **VCBP0042 model UC**

### PRODUCT CHARACTERISTICS:

- made of aluminum
- tiltable grip for an arm
- crutches height and arm handle length adjustments
- available in silver color

### USE:

Walking aid which improves stability and maintains upright ambulation, especially useful when an injury or disability affects one leg only.



**tiltable grip**



**anti-slip  
protection tip**



Height (cm)

95 - 126



Weight (kg)

0,50



Maximum capacity (kg)

100



# ARMPIT CRUTCHES

catalogue no. **VCBP0041**

## PRODUCT CHARACTERISTICS:

- made of aluminum
- armpit and hand parts covered in polyurethane foam, warm to the touch
- packed in pairs
- armrest height and handle height gradual adjustments every 2.5 cm

## USE:

Walking aid which improves stability and maintains upright ambulation, especially useful when an injury or disability affects one leg only.



polyurethane parts



handles height adjustment



Size

Height (cm)



Weight (kg)



Maximum capacity (kg)

S

93 - 113

1,60

100

M

113 - 133

1,70

100

L

133 - 153

1,80

100

**FIX** *walker*catalogue no. **VCBP0032****PRODUCT CHARACTERISTICS:**

- foldable aluminum frame
- stable and durable construction
- legs finished with non-slip rubber tips
- ergonomic handles
- gradual height adjustments every 2.5 cm

**USE:**

Walking aid which improves stability and helps to maintain upright ambulation.



ergonomic handles



gradual height adjustment



Height (cm)

XXSS

79,5 - 97,5



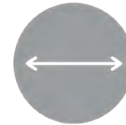
Weight (kg)

2,5



Maximum capacity (kg)

110



Width (cm)

57

# WAVE *walker*

catalogue no. **VCBP0032**

## PRODUCT CHARACTERISTICS:

- foldable aluminum frame
- reinforced joints
- construction ensures easy standing up
- legs finished with non-slip rubber tips
- ergonomic handles
- gradual height adjustments every 2.5 cm

## USE:

Walking aid which improves stability and maintains upright ambulation, especially useful when an injury or disability affects one leg only.



**wave-like design  
helps to stand up**



Height (cm)

76,5 - 94



Weight (kg)

2,5



Maximum capacity (kg)

100



Width (cm)

54



## DUAL *walker*

catalogue no. **VCBP0031**

**PRODUCT CHARACTERISTICS:**

- foldable aluminum frame
- stable and durable construction
- supports both standing and walking
- walking mode can be easily blocked
- legs finished with non-slip rubber tips
- ergonomic handles
- gradual height adjustments every 2.5 cm

**USE:**

Walking aid which improves stability and helps to maintain upright ambulation.



ergonomic handles



easy way to block the walking function



2FSD

Height (cm)

82 - 99



Weight (kg)

2,5



Maximum capacity (kg)

110



Width (cm)

54

# WHEELER *walker*

catalogue no. **VCBP0032**

## PRODUCT CHARACTERISTICS:

- foldable aluminum frame
- additional reinforcements
- rear legs finished with rubber anti-slip tips
- 12 cm diameter front wheels
- ergonomic handles
- gradual height adjustments every 2.5 cm

## USE:

Walking aid which improves stability and helps to maintain upright ambulation.



**KXY**



**KXSS**



Height (cm)



Weight (kg)



Maximum capacity (kg)



Width (cm)

**KXSS**

80 - 97,5

2,5

110

64

**KXY**

76-98

2,5

110

64

# BOLA *walker*

catalogue no. **VCBP0031**

## PRODUCT CHARACTERISTICS:

- foldable aluminum frame
- stable and durable construction
- easy folding due to the regulation ball
- 12 cm diameter front wheels
- rear legs finished with non-slip rubber tips
- ergonomic handles
- gradual height adjustment every 2.5 cm

## USE:

Walking aid which improves stability and helps to maintain upright ambulation.



**ball for easy  
folding**



**ergonomic  
handles**



Height (cm)  
85 - 92



Weight (kg)  
2



Maximum capacity (kg)  
110



Width (cm)  
65

# CARTER

## walker

catalogue no. **VCBP0032**

### PRODUCT CHARACTERISTICS:

- foldable, aluminium frame
- reinforced joints
- ergonomic handles
- four wheels with a diameter of 8 cm
- lockable rear wheels
- gradual height adjustments every 2.5 cm

### USE:

Walking aid which improves stability and helps to maintain upright ambulation.



Height (cm)

81,5 - 91,5



Weight (kg)

3,7



Maximum capacity (kg)

110



Width (cm)

55

# TRIPLA *walker*

catalogue no. **VCBP0031**

## PRODUCT CHARACTERISTICS:

- foldable aluminum frame
- stable and durable construction
- can be used for walking, standing or as a wheeled walker
- walking mode can be easily blocked
- additional removable front wheels with 12 cm diameter
- ergonomic handles
- gradual height adjustments every 2.5 cm

## USE:

Walking aid which improves stability and helps to maintain upright ambulation.



**additional tips**



Height (cm)

82 - 100



Weight (kg)

2,3 - 2,5



Maximum capacity (kg)

110



Width (cm)

60



**ALEX**

## 2-wheel rollator

catalogue no. **VCBK1**

### PRODUCT CHARACTERISTICS:

- foldable steel frame
- seat made of PU
- two full wheels and rear rubber tips
- ergonomic handles
- adjustable height

### USE:

Walking aid which improves stability and helps to maintain upright ambulation.



Height (cm)

80 - 94



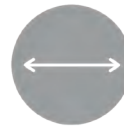
Weight (kg)

5



Maximum capacity (kg)

100



Width (cm)

54

# ALEX LIGHT *2-wheel rollator*

catalogue no. **VCBP0031**

**PRODUCT CHARACTERISTICS:**

- aluminum foldable frame
- anatomic handles made of PVC
- solid wheels with a diameter of 15 cm

**USE:**

Walking aid which improves stability and maintain upright ambulation.



Height (cm)

78 - 88



Weight (kg)

6



Maximum capacity (kg)

135



Width (cm)

61



Wheel diameter (cm)

15

# AMBONA

## 4-wheel walker

catalogue no. **VCBK2A**

### PRODUCT CHARACTERISTICS:

- steel frame
- soft armrest height adjustment
- handle height and angle adjustment
- rear wheels with brakes
- 3" or 5" rubber wheels upon request
- two variants to choose from: silver with rounded triangular adjustment handles or blue with lever-shaped adjustment handles

### USE:

Walking aid which improves stability and helps to maintain upright ambulation.



second variant



first variant



Height (cm)

80 - 94



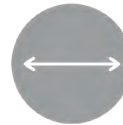
Weight (kg)

11



Maximum capacity (kg)

120



Width (cm)

59

# TOM 3 - wheel rollator

catalogue no. **VCBK521**

**PRODUCT CHARACTERISTICS:**

- steel foldable frame
- lockable brakes
- three PU wheels with diameter of 20 cm
- zipped shopping bag
- adjustable height

**USE:**

Walking aid which improves stability and maintain upright ambulation.



**ergonomic handles**



**shopping basket with tray**



**Height (cm)**  
83-95,5



**Weight (kg)**  
6,6



**Maximum capacity (kg)**  
110



**Width (cm)**  
69



**Wheel diameter (cm)**  
15

# BILLY

## 3 - wheel rollator

catalogue number **VCBK5221**

### PRODUCT CHARACTERISTICS:

- foldable, aluminum frame (easy to transport)
- lockable brakes
- three 19 cm diameter wheels
- adjustable height
- adjustable rear wheels position
- ergonomic handles
- zipped shopping bag
- front shopping basket with tray

### USE:

Walking aid which improves stability and helps to transport the luggage.



Maximum capacity (kg)

120



Width (cm)

60,5



Wheel diameter (cm)

19



Height (cm)

80 - 93,5



Weight (kg)

5,3

# FRANK

## 4 - wheel rollator

catalogue number **VCBK221**

### PRODUCT CHARACTERISTICS:

- steel folding frame
- PU seat
- lockable brakes
- four maintenance-free wheels with 20 cm diameter
- adjustable height
- ergonomic handles
- front shopping basket
- tray fixed to the seat
- cane holder

### USE:

Walking aid which improves stability and helps to transport the luggage.



shopping basket



handles with brake levers



Height (cm)  
79 - 98



Weight (kg)  
7,2



Maximum capacity (kg)  
130



Width (cm)  
60



Wheel diameter (cm)  
20

**EDI**

## 4 - wheel rollator

 catalogue number **VCBK223**
**PRODUCT CHARACTERISTICS:**

- foldable steel frame (easy to transport)
- seat made of PU
- lockable brakes
- four maintenance-free wheels with 20 cm diameter
- adjustable height
- ergonomic handles with depth adjustment
- shopping basket
- removable tray attached to the seat
- cane holder

**USE:**

Walking aid which improves stability and helps to transport the luggage.



ergonomic handles


 seat made of PU  
with tray

 Height (cm)  
113 - 135

 Weight (kg)  
12

 Maximum capacity (kg)  
120

 Width (cm)  
58

 wheel diameter (cm)  
20

# ROCKY

## 4 - wheel rollator

catalogue number **VCBK23231**

**PRODUCT CHARACTERISTICS:**

- foldable aluminum frame (easy to transport)
- soft seat covered with leatherlike
- lockable brakes
- four 20 cm diameter wheels, easily dismantled
- double height adjustment
- ergonomic handles
- shopping bag
- tiltable backrest safety barrier
- cane holder

**USE:**

Walking aid which improves stability and helps to transport the luggage.



**big wheels**



**ergonomic handles  
with brake levers**



Height (cm)  
78 - 93



Weight (kg)  
7,3



Maximum capacity (kg)  
120



Width (cm)  
62



Wheel diameter (cm)  
20



# ROCKY BASIC

## 4 - wheel rollator

catalogue number **VCBK23231B**

### PRODUCT CHARACTERISTICS:

- foldable aluminum frame (easy to transport)
- soft seat covered with leatherlike
- lockable brakes
- four 20 cm diameter wheels, easily dismantled
- adjustable height
- ergonomic handles
- shopping bag
- tiltable backrest safety barrier
- cane holder

### USE:

Walking aid which improves stability and helps to transport the luggage.



ergonomic handles



Height (cm)

78 - 93



Weight (kg)

6,5



Maximum capacity (kg)

120



Width (cm)

62



Wheel diameter (cm)

20

# GRASS 4 - wheel rollator

catalogue number **VCBK23242**

## PRODUCT CHARACTERISTICS:

- foldable, aluminum frame (easy to transport)
- soft seat covered with breathable spacer fabric
- lockable brakes
- four wheels with 20.5cm diameter, easily dismantled
- gradual height adjustment along with seat height adjustment
- shopping bag
- tiltable backrest safety barrier
- cane holder
- frame color: green olive

## USE:

Walking aid which improves stability and helps to transport the luggage.



Height (cm)

85,5 - 101



Weight (kg)

6,4



Maximum capacity (kg)

120



Width (cm)

67



Wheel diameter (cm)

20,5

## ROSE 4 - wheel rollator

catalogue number **VCBK222T with bag or basket**

### PRODUCT CHARACTERISTICS:

- aluminum folding frame (easy to transport)
- soft seat covered with eco-leather
- lockable brakes
- four maintenance-free 20 cm diameter wheels,
- swivel front wheels
- adjustable height
- ergonomic handles
- shopping basket
- possibility of changing the direction of moving while the rollator is pushed by third person
- footrest

### USE:

Walking aid which improves stability and helps to transport the luggage.



handles with brake levers



handles that helps to stand up (bag version)



Height (cm)



Weight (kg)



Maximum capacity (kg)



Width (cm)



Wheel diameter (cm)

	Height (cm)	Weight (kg)	Maximum capacity (kg)	Width (cm)	Wheel diameter (cm)
basket	93	8	110	62	20
bag	81-96	8	120	62	20

# MOBILUS LITE

4 - wheel  
rollator

catalogue number **VCBK222B**

**PRODUCT CHARACTERISTICS:**

- aluminum folding frame (easy to transport)
- soft seat
- lockable brakes
- front wheels with 19 cm diameter, easily folded
- rear wheels with 17 cm diameter
- adjustable height
- ergonomic handles
- shopping bag
- safety belt
- cane holder

**USE:**

Walking aid which improves stability and helps to transport the luggage.



shopping bag



adjustable height



Maximum capacity (kg)

136



Width (cm)

67



Wheel diameter (cm)

19



Weight (kg)

7,5



Height (cm)

77 - 88





# **STEEL MANUAL WHEELCHAIRS**

## BASIC, BASIC PLUS

### *standard wheelchair*

catalogue number **VCWK43B - Basic**  
catalogue number **VCWK43BP - Basic Plus**

#### PRODUCT CHARACTERISTICS - BASIC:

- foldable steel frame (cross construction)
- upholstery made of black nylon
- safety belt
- removable and tiltable footrest
- adjustable length of footrest
- removable armrest
- rear pocket
- calf belt
- full front wheels 200 mm x 45 mm
- 24" full or pneumatic rear wheels without quick release system

#### PRODUCT CHARACTERISTICS - BASIC PLUS:

- all as above
- full or pneumatic rear wheels 24" with quick release system

#### USE:

General use wheelchair, to use at home and for strolls.



CE VITEA<sup>®</sup>  
CARE

	16"	18"	20"
Seat width (cm)	40	45	50
Seat depth (cm)	40	40	40
Max stoller height (cm)	91	91	91
Max stoller width (cm)	58	63	68
Max stoller length (cm)	110	110	110
Width of folded stoller (cm)	28	30	32
Stoller weight (kg)	18,5	19	20
Max capacity (kg)	120	120	120

**SOLID PLUS***standard  
wheelchair*catalogue number **VCWK43L****PRODUCT CHARACTERISTICS:**

- foldable steel frame (double cross construction)
- upholstery made of black nylon
- without soft cushion
- safety belt
- lifted armrest
- removable and tiltable footrest with adjustable length
- steel brakes with pressure adjustment
- rear pocket
- calf belt
- full front wheels 200 mm x 45 mm
- 24" full rear wheels with quick release system
- steel handrims

**USE:**

General use wheelchair, to use at home and for strolls.



CE VITEA<sup>®</sup>  
CARE

	16"	18"	20"
Seat width (cm)	40	45	50
Seat depth (cm)	40	40	40
Max stoller height (cm)	91	91	91
Max stoller width (cm)	58	63	68
Max stoller length (cm)	110	110	110
Width of folded stoller (cm)	28	30	32
Stoller weight (kg)	18,5	19	20
Max capacity (kg)	120	120	120



## FORTE PLUS *standard wheelchair*

catalogue number **VCWK42L**

### PRODUCT CHARACTERISTICS:

- foldable steel frame (double cross construction)
- upholstery made of black nylon
- soft cushion
- safety belt
- tiltable armrest
- removable and tiltable footrest with adjustable length
- steel brakes with pressure adjustment
- rear pocket
- calf belt
- full front wheels 200 mm x 45 mm
- full rear wheels 24" with quick release system
- steel handrims

### USE:

General use wheelchair, to use at home and for strolls.

Wheelchair safety model has been tested in accordance with ISO 7176-19:2008



CE VITEA<sup>®</sup>  
CARE

	16"	18"	20"
Seat width (cm)	40	45	50
Seat depth (cm)	40	40	42
Max stoller height (cm)	96	96	96
Max stoller width (cm)	61	67	68
Max stoller length (cm)	112	112	112
Width of folded stoller (cm)	28	28	30
Stoller weight (kg)	17	18	17
Max capacity (kg)	120	120	120



# COMMODE WHEELCHAIRS

# COMMODE WHEELCHAIR

catalogue number **VCWK2**

## PRODUCT CHARACTERISTICS:

- steel frame with paint finish
- foldable, easy to transport
- black soft seat
- seat height allows to easily position patient over the toilet
- removable and tiltable footrest
- removable backrest
- tiltable armrests
- four PU wheels with diameter of 12,5 cm
- rear wheels with brakes
- sanitary bucket

## USE:

General use wheelchair, to use at home and for strolls with toilet function.



Height (cm)

93



Weight (kg)

11



Maximum capacity (kg)

100



Width (cm)

55



wheel diameter (cm)

12,5

**TRUST***standard wheelchair  
with toilet function*catalogue number **VCWK4T****PRODUCT CHARACTERISTICS:**

- foldable, steel frame (double cross construction)
- soft seat and backrest made of eco leather
- segmented seat with removable element, which enables to get sanitary hole
- removable armrest
- removable and tiltable armrest with adjustable length
- steel brakes with pressure adjustment
- sanitary bucket mounted under the seat
- varnished steel handrims
- pneumatic 24" rear wheels
- maintenance-free front full wheels

**USE:**

General use wheelchair, to use at home and for strolls with toilet function.



Height (cm)

90



Weight (kg)

20



Maximum capacity (kg)

110



Width (cm)

67



wheel diameter (cm)

61

# **ALUMINUM WHEELCHAIRS**

**FELIZ***aluminum  
wheelchair*catalogue number **VCWK9AL****PRODUCT CHARACTERISTICS:**

- foldable, lightweight, aluminium frame of cross structure (double cross)
- soft nylon seat and backrest
- soft foam cushion
- removable and tiltable footrest with adjustable length
- footrest straps to secure the feet
- removable and tiltable armrest
- anti-fall lap belt
- maintenance-free front wheels 200 mm x 50 mm
- 24" pneumatic rear wheels with quick release system
- aluminum handrims
- double breaking system (for the patient and for the caregiver)
- anti-tipping wheels

**USE:**

General use wheelchair, to use at home and for strolls.


**VITEA<sup>®</sup>  
CARE**

	<b>16"</b>	<b>18"</b>	<b>20"</b>
Seat width (cm)	40	45	50
Seat depth (cm)	40	40	40
Max stoller height (cm)	93	92	93
Max stoller width (cm)	58	63	68
Max stoller length (cm)	110	110	110
Width of folded stoller (cm)	33	33	33
Stoller weight (kg)	16	16	16
Max capacity (kg)	140	140	140

# CAMELEON

## aluminum wheelchair

catalogue number **VCWK9AC**

### PRODUCT CHARACTERISTICS:

- foldable, lightweight aluminium frame (double cross)
- removable upholstery made of sweat absorbing material, red and black or blue and black colors available
- backrest based on Velcro tapes to adjust the tension intensity
- possible adjustment of the front and rear wheels
- anti-bedsore cushion
- tiltable armrests
- removable and tiltable footrest
- calf belt
- double breaking system (for the patient and for the caregiver)
- anti-fall belt
- 24" rear wheels with quick release system
- front full wheels, size 200 mm x 50 mm
- rear pocket
- anti-tipping wheels

### USE:

General use wheelchair, to use at home and for strolls.



CE VITEA<sup>®</sup>  
CARE

	16"	18"	20"
Seat width (cm)	40	45	50
Seat depth (cm)	40,5	40,5	40,5
Max stoller height (cm)	96	96	96
Max stoller width (cm)	59	64	70
Max stoller length (cm)	101,5	101,5	101,5
Width of folded stoller (cm)	37	37	37
Stoller weight (kg)	16	16	16
Max capacity (kg)	125	125	125

**TITANUM***aluminum  
wheelchair*catalogue number **VCWK9AT****PRODUCT CHARACTERISTICS:**

- foldable cross frame
- removable and tiltable footrest with adjustable length
- adjustable length of the footrests
- adjustable tilt angle of the footrests
- footrest with heel counters
- possible change of the wheelchair centre of gravity or seat height
- possible change of seat angle
- rear wheels provided with reflective elements
- safety lap belt
- calf belt
- anti-tipping rear wheels
- lifted, detachable armrest to facilitate change of the patient's seat
- foldable brake handle to facilitate change of the patient's seat
- brake with adjustable pressure intensity
- frame color: metallic silver
- black nylon upholstery
- possible change of the front and rear wheels height and adjustment of the front wheel fork head
- 24" rear wheels with quick-release system
- optional pneumatic or full rear wheels
- 8" full front wheels

**USE:**

General use wheelchair, to use at home and for strolls.



	16"	17"	18"	20"
Seat width (cm)	40	43	45	50
Seat depth (cm)	40	40	40	40
Max stoller height (cm)	96	96	96	96
Max stoller width (cm)	62,5	65	67,5	70
Max stoller length (cm)	102	102	102	102
Width of folded stoller (cm)	31	31	31	31
Stoller weight (kg)	16	16	16	16
Max capacity (kg)	125	125	125	125



## SILVER *aluminum wheelchair*

catalogue number **VCWK9ASR**

### PRODUCT CHARACTERISTICS:

- lightweight aluminum frame of cross structure
- backrest made with straps with possibility of tension intensity and depth adjustments
- anti-fall lap belt
- removable and backwards tilting armrests with adjustable height
- removable and tiltable footrest with adjustable height
- calf belt
- brakes with adjustable pressure intensity
- rear wheels with quick release system
- anti-tipping, upwards tilting front wheels with adjustable height
- foam cushion
- reflective elements
- pocket on the backrest
- module structure
- air pump (refers to the wheelchair with pneumatic wheels)
- suitable for use by an amputee
- wheelchair color: silver, upholstery color: black (removable backrest upholstery)
- separate ergonomic handles to push a wheelchair
- possible adjustment of seat angle by adjusting wheels height
- front wheels adjustable angle
- aluminum handrims



### USE:

General use wheelchair, to use at home and for strolls.

CE VITEA<sup>®</sup>  
CARE  
*Premium*

	16"	17"	18"	20"
Seat width (cm)	40	43	45	50
Seat depth (cm)	42	42	42	42
Max stoller height (cm)	89	89	89	95
Max stoller width (cm)	60	63	66	69
Max stoller length (cm)	104	104	104	104
Width of folded stoller (cm)	35	35	35	35
Stoller weight (kg)	16	16	16,5	16,5
Max capacity (kg)	120	120	120	120

**PLATINUM***aluminum  
wheelchair*catalogue number **VCWK9ASZ****PRODUCT CHARACTERISTICS:**

- lightweight aluminum frame of cross structure
- backrest made with straps with possibility of tension intensity and depth adjustment
- anti-fall lap belt
- removable and backwards tilting armrests with adjustable height and depth
- removable and tiltable footrest with adjustable tilt angle
- adjustable backrest angle
- adjustable seat depth
- calf belt
- brakes with adjustable pressure intensity
- rear wheels with quick release system
- anti-tipping, upwards tilting front wheels with adjustable height
- seat provided with a foam cushion
- reflective elements
- pocket in the backrest upholstery
- adjustable height of handles used by a caregiver
- air pump (only with the wheelchair with pneumatic wheels)
- supplied with a set of keys
- suitable for use by an amputee
- wheelchair color: champagne, upholstery color: black
- removable backrest upholstery
- adjustable angle of the front wheels
- possible change of the centre of gravity by placing driving wheels at the back of the wheelchair using special varioblock

**USE:**

General use wheelchair, to use at home and for strolls.



CE VITEA<sup>®</sup>  
CARE  
*Premium*

	16"	17"	18"	20"
Seat width (cm)	40	42	45	50
Seat depth (cm)	42	42	42	42
Max stoller height (cm)	95	95	95	95
Max stoller width (cm)	65	67	70	74
Max stoller length (cm)	111	111	111	111
Width of folded stoller (cm)	35	35	35	35
Stoller weight (kg)	18,5	18,5	19	19
Max capacity (kg)	140	140	140	140

## ACTIVE SPORT *aluminum wheelchair*

catalogue number **VCWK9AS**

### PRODUCT CHARACTERISTICS:

- foldable, lightweight aluminium frame of cross structure
- removable, nylon black upholstery
- backrest based on Velcro tapes to adjust seat depth
- split backrest
- corrugated anti-bedsore cushion
- anti-fall belt
- adjustable armrest height
- side supports
- removable and tiltable footrest with straps
- footrest adjustable length
- adjustable rear and front wheels relative to the frame
- rear anti-tipping wheels with adjustable height
- 6" full front wheels
- 24" pneumatic rear wheels with quick release system
- possible change of the wheelchair centre of gravity by adjusting rear wheels position
- possible change of the axis height in the front and rear wheels
- reflective elements on the rear frame parts
- roller brakes with adjustable pressure intensity
- aluminum handrims
- modern structure and design
- frame color: silver, blue



### USE:

General use wheelchair, to use at home and for strolls.

CE VITEA<sup>®</sup>  
CARE

	16"	17"	18"
Seat width (cm)	40	43	45
Seat depth (cm)	39	39	39
Max stoller height (cm)	91	91	91
Max stoller width (cm)	66	69	72
Max stoller length (cm)	101	101	101
Width of folded stoller (cm)	33	33	33
Stoller weight (kg)	15	15,5	15,5
Max capacity (kg)	115	115	115



# **SPECIAL WHEELCHAIRS**

## RECLINER *special wheelchair*

catalogue number **VCWK703**

### PRODUCT CHARACTERISTICS:

- aluminum frame of cross structure (double cross)
- adjustable seating with the possibility of lying or sitting position
- seat made of black nylon with high and soft cushion
- anti-fall belt
- removable and tiltable footrest with calf belt
- removable armrests
- removable upper part of the backrest
- anti-tipping rear wheels
- full front wheels, size 200 mm x 50 mm
- 24" pneumatic rear wheels with quick release system
- aluminum handrims
- roller brake operated by the patient
- tray

### USE:

Multi-position wheelchair is reliable both when used outside, and at home. As it can be adjusted to individual needs, it is suitable for all patients.



CE VITEA<sup>®</sup>  
CARE

	17"	18"
Seat width (cm)	40	45
Wheelchair width (cm)	65	71,5
Seat depth (cm)	46	46
Wheelchair height (cm)	130	130
Wheelchair height with the upper part of the backrest (cm)	93,5	93,5
Backrest height (cm)	40	40
Wheelchair length (cm)	90 - 125	90 - 125
Weight (kg)	20 - 23	20 - 23
Maximum capacity (kg)	100	100

## RECLINER PLUS

catalogue number **VCWK7T**

### PRODUCT CHARACTERISTICS:

- foldable steel frame (double cross construction)
- adjustable seat with the possibility of lying or sitting position
- black seat made of nylon or polyurethane material
- segmented seat with removable part that enables sanitary hole
- removable and tiltable footrest with angle adjustment and calf belt
- removable armrests
- removable upper part of backrest
- anti-tipping wheels
- front full wheels 200 mm x 45 mm
- 24" pneumatic rear wheels with quick release system
- aluminium handrims
- sanitary bucket
- tray

### USE:

Multi-position wheelchair is reliable both when used outside, and at home. As it can be adjusted to individual needs, it is suitable for all patients.



CE VITEA<sup>®</sup>  
CARE

Seat width (cm)	44
Wheelchair width (cm)	70
Seat depth (cm)	46
Wheelchair height (cm)	121
Wheelchair height without the upper part of the backrest (cm)	93,5
Backrest height (cm)	42
Wheelchair length (cm)	135 - 168
Weight (kg)	23
Maximum capacity (kg)	100

## RECLINER EXTRA

### *special wheelchair*

catalogue number **VCWK702**

#### PRODUCT CHARACTERISTICS:

- aluminum frame of cross structure
- adjustable seating with the possibility of lying or sitting position
- seat made of black nylon with high and soft cushion
- anti-fall belt
- removable and tiltable footrest with adjustable tilt angle, length and lower leg support
- removable armrests
- removable upper part of the wheelchair
- rear anti-tipping wheels with adjustable height
- 24" pneumatic rear wheels with quick release system
- 8" front full wheels
- aluminum handrims
- double braking system (for the patient and for the caregiver) provided with lockable brakes
- rear handlebar to stabilize the wheelchair
- air pump

#### USE:

Multi-position wheelchair is reliable both when used outside, and at home. As it can be adjusted to individual needs, it is suitable for all patients.



CE VITEA<sup>®</sup>  
CARE

Seat width (cm)	45
Wheelchair width (cm)	67,5
Seat depth (cm)	43
Wheelchair height (cm)	133
Wheelchair height without the upper part of the backrest (cm)	114 - 198
Wheelchair length (cm)	128 - 143
Weight (kg)	22,6
Maximum capacity (kg)	120



## PREMIUM *special wheelchair*

catalogue number **VCWK9CP**

### PRODUCT CHARACTERISTICS:

- foldable aluminium frame of cross structure
- smooth adjustment of the seat angle through the use of gas actuator to a half-lying position (35 degrees)
- removable headrest adjustable in vertical and horizontal axes
- gradual seat depth adjustment with possible seating upholstery extension
- removable, nylon black upholstery of the backrest
- backrest based on Velcro tapes to adjust the tension intensity
- high (5 cm), soft seat cushion
- anti-fall belt
- removable and tiltable footrest with optional adjustable bend angle and length along with thighs support; or standard with adjustable length and footrest tilt angle
- front and rear wheels adjustable height
- possible change of the centre of gravity by adjusting rear wheels position
- removable and backwards tilting armrests made of plastic
- possible armrest adjustment in vertical and horizontal axes
- rear handlebar to stabilize the wheelchair during backrest unfolding
- reinforced cross to increase wheelchair stiffness
- adjustable angle of the front wheels forks
- rear supporting wheels with adjustable height
- 8" full front wheels
- 24" pneumatic rear wheels quick release system
- roller brakes with adjustable pressure intensity
- aluminium handrims
- nylon black upholstery, silver frame
- available two seat widths: 42 and 46 cm

### USE:

Multi-position wheelchair is reliable both when used outside, and at home. As it can be adjusted to individual needs, it is suitable for all patients.

Seat width (cm)	42 / 46
Seat depth (cm)	40 - 52,5
Wheelchair width(cm)	62
Wheelchair height without headrest (cm)	87 - 97
Seat height front/ back (cm)	45 - 50 / 40- 50
Wheelchair length (cm)	106 - 116
Weight (kg)	20,5
Maximum capacity (kg)	115



# SUPPORT

## special wheelchair

catalogue number **VCWK7CP**

### PRODUCT CHARACTERISTICS:

- steel, reinforced and stable frame
- foldable backrest
- removable, anti-bedsore upholstery made of memory foam with waterproof cover
- adjustable seat width
- smooth angle adjustment either of a seat with a backrest, or the seat alone
- removable and tiltable footrests with adjustable tilt angle, height and lower leg support
- front wheels height axis adjustment
- height-adjustable, removable armrests made of soft, comfortable and easy to wash material
- smooth adjustment of armrests position in horizontal axis
- side supports adjustable in horizontal and vertical axes
- double handles with adjustable height
- height-adjustable removable headrest (angle adjustment)
- roller brakes with adjustable pressure intensity
- aluminium handrims
- anti-tipping rear wheels with adjustable height
- full front wheels 200 mm x 50 mm
- 24" pneumatic rear wheels with quick release system air pump

### USE:

Multi-position wheelchair is reliable both when used outside, and at home. As it can be adjusted to individual needs, it is suitable for all patients.



CE VITEA<sup>®</sup>  
CARE

	16"	18"
Seat width (cm)	36 - 43	45 - 50
Seat depth (cm)	42 - 48	42 - 48
Wheelchair height (cm)	96	96
Wheelchair width (cm)	54,5	64,5
Wheelchair length (cm)	108	108
Weight (kg)	42	42
Maximum capacity (kg)	136	136



## HERO MANUAL

*special  
wheelchair*

catalogue number **DRVLOF**

### PRODUCT CHARACTERISTICS:

- steel frame
- removable backrest
- perforated upholstery made of artificial leather
- height-adjustable headrest
- front coated safety barrier
- torso stabilizing belt with adjustable length
- lap stabilizing belt with adjustable length
- tiltable armrests with adjustable height
- removable and tiltable footrest with adjustable height
- heel loop
- adjustable knee strap
- anti-tipping rear wheels
- pair of extra front wheels for additional stabilization
- manual brakes with adjustable pressure intensity
- 24" pneumatic, rear mag wheels with aluminium handrims
- 24" rear wheels with quick release system
- 8" full front wheels
- adjustment of the front and rear wheels height
- handles for the caregiver
- remote control

### USE:

Manual wheelchair with the possibility of electric verticalization through the use of actuators.



	<b>M</b>	<b>L</b>	<b>XL</b>
Wheelchair length (cm)	110	113	113
Wheelchair width (cm)	63	67	71
Wheelchair height (cm)	96,5	98	98
Seat depth (cm)	42,5	45,5	48
Seat width (cm)	42	46	50
Backrest height (cm)	45	52	54

**WHEELCHAIRS,  
STROLLERS AND  
CAR SEAT  
FOR CHILDREN**

A decorative dotted line in the bottom-left corner, consisting of a vertical line of dots on the left and a horizontal line of dots extending to the right from the bottom of the vertical line.



## **FUN BABY** *children rehabilitative car seat*

Catalogue number: **DRVR08**

Fun Baby is a modern, functional and safe rehabilitation child seat designed for transporting children with special needs. The possibility of using a special seat in three weight classes is a unique solution on the car seat market area, allowing it to be used for children from birth to around 12 years of age.

### PRODUCT CHARACTERISTIC:

- headrest height adjustment for head stabilization
- height adjustable backrest (adapted to the child's changing height)
- pelvic stabilizing side supports
- torso stabilizing side supports
- crotch cover
- adjustable shoulder belt
- 5-point adjustable safety seat belts
- air cushion and sleeping pad
- adapted to ISOFIX system
- can be mounted front-facing or back-facing according to the direction of the movement
- revolving base - 360 degrees rotation, easy to put child in
- adjustable seat and backrest tilt angle (cradle-like configuration)
- removable upholstery
- upholstery made of breathable spacer fabric
- available in two colors: red-black and graphite-black
- optional equipment: tray, durable pad to protect seat under seat, organizer and front seat protection

### USE:

Intended for children with Cerebral Palsy, Spina Bifida and muscle disorders.



<b>Max child weight (kg)</b>	<b>0-36</b>	Seat height (cm)	61+20
Child height (cm)	50 - 140	Seat base length (cm)	39 + 18
Max seat width (cm)	35	Seat weight (kg)	11
Max seat depth (cm)	33		
Seat width (cm)	49		
Max range backrest angle	165 °		
Headrest width (cm)	28		

## OPTIONAL EQUIPMENT *fun baby*



*Front seat protector and organizer*



*Protective pad for the seat  
under the seat*



*Attachable table*



*Head stabilizing band*



*Abduction wedge*

# UMBRELLA

## children rehabilitative stroller

Catalogue number: **DRVG0C**

### PRODUCT CHARACTERISTIC:

- foldable, aluminum frame with reinforced steel elements
- upholstery made of high quality fabric attested by certificates of quality (OEKO-Tex, SGS)
- smoothly adjustable backrest tilt angle
- front wheels and rear wheels made of PU
- lockable front wheels
- front wheels attached via quick release system with independent brakes
- abduction wedge, front safety barrier covered with fabric and 5-point belt
- side supports and lumbar roller
- plastic footrest platform with gradual height adjustment (every 2.5 cm)
- footrest adjustable tilt angle with feet stabilizing straps
- headrest with height adjustment
- parent window in the canopy
- swivel handles with adjustable height
- standard equipment: canopy, shopping basket, cup holder, rain cover, sleeping cover
- optional equipment: umbrella, tray
- available in wide range of colors
- available in 3 sizes: 1, 2 and 3

### USE:

Intended for children with Cerebral Palsy, Spina Bifida, muscle disorders and lower limb dysfunction.



*Black and Pink*



*Black and Green*



*Black and Red*



*Black with Color dots*



*Black and White checkered*



*Black and Orange*



CE VITEA<sup>®</sup>  
CARE

	size 1	size 2	size 3
Seat width(cm)	30	35	40
Seat depth(cm)	25	30	40 - 45
Backrest height (cm)	50	54	75
Max stroller width (cm)	55	59	63
Max stroller length (cm)	88	100	105
Max stroller height (cm)	114	116	126
Dimensions when folded (lengthx width x height)	122 x 37 x 44	118 x 44 x 44	128 x 44 x 50
Front wheel diameter (cm)	18	18	17
Rear wheel diameter (cm)	22	22	25
Stroller weight (kg)	13,5	15	19
Max child weight (kg)	30	45	75
Max child height (cm)	120	140	170



# JUNIOR

## children rehabilitative stroller

Catalogue number: **DRVGOE**

### PRODUCT CHARACTERISTIC:

- foldable, steel-aluminum frame
- upholstery made of high quality fabric attested by certificates of quality (OEKO-Tex, SGS)
- adjustable backrest height and width resulting in wide range of possible positions, from sitting to lying
- seat with adjustable width and depth
- seat can be mounted front-facing or back-facing according to the direction of movement
- footrest adjustable length and tilt angle
- adjustable handle
- swivel front wheels attached via quick release
- rear wheels with shock absorbers made of PU attached via quick release
- headrest height adjustment
- front safety barrier covered with fabric
- belts protecting the child from falling out
- abduction wedge position adjustment
- standard equipment: canopy, shopping basket, rain cover, sleeping cover
- available in wide range of colors

### USE:

Intended for children with Cerebral Palsy, Spina Bifida, muscle disorders and lower limb dysfunction.



CE VITEA<sup>®</sup>  
CARE

Footrest height (cm)	24 - 33	Max stroller height (cm)	117
Seat width(cm)	25 - 30	Dimensions when folded (cm)	110 x 66 x 65
Seat depth (cm)	27 - 33	Front wheels diameter	22
Back lenght (cm)	47 - 51	Rear wheels diameter	27
Range of backrest angle (cm)	105° - 145°	Stroller weight (kg)	21 - 22
Max stroller width (cm)	66	Max child weight (kg)	30
Max stroller length(cm)	120	Max child height (cm)	125

**JUNIOR PLUS***children  
rehabilitative  
stroller*Catalogue number: **DRVG0J****PRODUCT CHARACTERISTIC:**

- foldable, steel-aluminum frame
- upholstery made of high quality fabric attested by certificates of quality (OEKO-Tex, SGS)
- adjustable backrest height and width resulting in wide range of possible positions, from sitting to lying
- seat with adjustable width and depth
- seat can be mounted front-facing or back-facing according to the direction of movement
- seat and backrest tilt angle adjustment
- armrest with adjustable height
- footrest length and tilt angle adjustment
- adjustable handle
- swivel front wheels attached via quick release
- rear wheels with shock absorbers made of PU attached via quick release
- height adjustable headrest
- front safety barrier covered with fabric
- belts protecting the child from falling out
- abduction wedge position adjustment
- standard equipment: canopy, shopping basket, rain cover, sleeping cover
- available in wide range of colors

**USE:**

Intended for children with Cerebral Palsy, Spina Bifida, muscle disorders and lower limb dysfunction.



Footrest height (cm)	24 - 33	Max stroller height (cm)	125
Seat width(cm)	33	Dimensions when folded (cm)	92 x 58 x 35
Seat depth (cm)	25 - 30	Front wheels diameter	24
Back lenght (cm)	47 - 50	Rear wheels diameter	27
Range of backrest angle (cm)	105° - 145°	Stroller weight (kg)	20
Max stroller width (cm)	64	Max child weight (kg)	30
Max stroller length (cm)	115	Max child height (cm)	125



**VITEA<sup>®</sup>**  
**CARE**

	<b>size 2</b>	<b>size 3</b>
Seat width(cm)	26 - 37	32 - 43
Seat depth(cm)	29 - 35	34 - 40
Backrest height (cm)	50 - 55	60 - 70
Max stroller width (cm)	60	61
Max stroller length (cm)	100	105
Max stroller height (cm)	116	120
Dimensions when folded (lengthx width x height)	100 x 60 x 116	105 x 61 x 120
Front wheel diameter (cm)	22	22
Rear wheel diameter (cm)	27	27
Stroller weight (kg)	19,5	21
Max child weight (kg)	40	75
Max child height (cm)	130	165

**COLORS**

*Junior and Junior Plus*



*Black and Orange*



*Black and Blue*



*Black and Green*



*Black and Pink*



*Black and Gray*



*Black and Red*



*Black with Color dots*



*Black and White checkered*



*Black with White dots*

**PROMYK**
*children  
rehabilitative stroller*

 Catalogue number: **DRVG0L**
**PRODUCT CHARACTERISTIC:**

- aluminum-steel reinforcing frame
- upholstery made of easy to clean high quality fabric at-  
tested by certificates of quality (OEKO-Tex, SGS)
- canopy protecting against sun and rain
- backrest tilt angle adjustment
- footrest length and tilt angle adjustments
- 3-point belt and brace
- adjustable handle
- headrest height adjustment
- abduction wedge position adjustment
- front safety barrier protecting the child from falling out
- front and rear wheels in two variants (PU or pneumatic)
- lockable rear wheels
- shopping bag on the back
- sleeping cover
- optional equipment: stabilizing vest, abduction belts for  
lower limbs, waist belt, raincover
- user weight up to 75kg

**USE:**

 Children's strolling cart for children with Cerebral Palsy, Spina  
Bifida and muscle disorders.


**VITEA<sup>®</sup>  
CARE**

Max stroller height (cm)	126	Seat width (cm)	39
Backrest width (cm)	38	Backrest height(cm)	75
Max stroller width(cm)	60	Stroller weight (kg)	max 25
Max stroller length (cm)	142	Front/ rear wheel diameter (cm)	24
Seat height (cm)	55	Max child weight (kg)	75
Seat depth (cm)	46	Max child height (cm)	170

NEW!



## PROMYK SPECIAL

*children  
rehabilitative  
stroller*

Catalogue number: **DRVG0N**

### PRODUCT CHARACTERISTIC:

- aluminum-steel reinforced frame
- seat and backrest tilt angle adjustment through the use of gas spring
- upholstery made of easy to clean fabric
- canopy protecting against sun and rain
- footrest length and angle adjustments
- 3-point belt and brace
- adjustable handle
- headrest height adjustment
- abduction wedge position adjustment
- front safety barrier protecting the child from falling out
- front and rear wheels in two variants (PU or pneumatic)
- rear wheels parking brake lock
- shopping bag on the back
- sleeping cover
- optional equipment: stabilizing vest, calf belt, waist belt, raincover
- user weight up to 75kg

### USE:

Intended for children with Cerebral Palsy, Spina Bifida, muscle disorders and lower limb dysfunction.

CE VITEA<sup>®</sup>  
CARE

Max stroller height (cm)	126	Seat width (cm)	39
Backrest width (cm)	38	Backrest height(cm)	75
Max stroller width(cm)	60	Stroller weight (kg)	30
Max stroller lenght (cm)	142	Front/ rear wheel diameter (cm)	24/24
Seat hight (cm)	58	Max child weight (kg)	75
Seat depth (cm)	47	Max child height (cm)	170

# BACZUS RELAX

## aluminum children's wheelchair

catalogue number **VCWR211R**

### PRODUCT CHARACTERISTICS:

- foldable aluminum frame of (cross structure)
- removable, easy to wash nylon upholstery
- removable seat and backrest
- backrest tilt angle adjustment
- headrest height and angle adjustment
- removable side supports
- abduction wedge depth adjustment
- footrest height adjustment, lower leg pads
- side stabilizing supports
- liftable armrests with tilt angle adjustment
- 5-point belt preventing falling out
- front wheels height axis adjustment
- roller brakes with adjustable pressure intensity
- aluminium handrims
- 6" full front wheels
- height adjustable anti-tipping rear wheels
- 20" pneumatic rear wheels with quick release'
- air pump
- tray
- frame color: red, blue

### USE:

For children with Cerebral Palsy, Spina Bifida, muscle disease.



CE VITEA<sup>®</sup>  
CARE

	13"	15"
Seat width (cm)	33	38
Seat depth (cm)	34	36
Wheelchair height (cm)	97,5	97,5
Wheelchair width (cm)	54,5	64,6
Wheelchair length (cm)	87,5	87,5
Weight (kg)	27,5	27,5
Maximum capacity (kg)	90	90

**BABY HERO***aluminum children's  
wheelchair*catalogue number **DRVLOG****PRODUCT CHARACTERISTICS:**

- aluminum frame
- removable backrest
- perforated upholstery made of artificial leather
- height-adjustable headrest
- front safety barrier
- torso stabilizing belt with length adjustment
- lap stabilizing belt with length adjustment
- liftable armrests with adjustable height
- removable footrest with height and tilt angle adjustment
- heel loop
- adjustable knee strap
- anti-tipping rear wheels
- extra stabilizing front wheels
- manual brakes with adjustable pressure intensity
- 24" pneumatic rear mag wheels with aluminium handrims with quick release system
- 8" full front wheels
- front and rear wheels height adjustment
- handles for the caregiver
- remote control



	<b>K</b>	<b>S</b>
Seat width	104,5	106
Seat depth	55,5	58,5
Wheelchair width (cm)	86	90
Wheelchair length (cm)	34	40
Wheelchair height (cm)	34	38
Backrest height (cm)	37	42
Maximum capacity (kg)	100	100



**POWER**

**WHEELCHAIRS**



**SCRUBBY**
*aluminum children's  
power wheelchair*

 catalogue number **DRVLOG PCBL 1220/1420**
**PRODUCT CHARACTERISTICS:**

- amortized, aluminum frame
- seat width: 12" and 14"
- adjustable seat depth and width
- electrically adjustable seat angle 10° (max 18 cm)
- foldable backrest with tilt angle adjustment
- seat belt preventing falling out
- soft foam cushion
- headrest adjustment
- height adjustable armrest
- removable footrest with lower leg support (adjustable tilt angle)
- footrest length adjustment
- road safety lights (LED bulbs)
- electric motor on/off feature
- control unit mounted on the right or left side upon request
- caregiver control unit mounted on the right or left side upon request
- control unit horizontal axis adjustment
- aluminium rims
- foldable anti-tipping rear wheels

**USE:**

For indoor and outdoor use for children and people with short stature.



**VITEA<sup>®</sup>  
CARE**

Motor (W)	2 x 300
Batteries (Ah)	2 x 55
Maximum speed (km/h)	12
Range * (km)	36
Turning radius (cm)	95
Length (cm)	100
Width (cm)	56
Weight (kg)	with batt. 73,5, without batt. 102
Maximum capacity (kg)	80

**EASY***power wheelchair*catalogue number **W1032****PRODUCT CHARACTERISTICS:**

- seat width: 16" and 18"
- cross foldable aluminium frame
- removable and breathable grey upholstery
- removable and adjustable armrest
- removable and tiltable footrest
- electromagnetic brake
- LED road safety lights
- rear anti-tipping wheels
- front wheels: 9"
- rear wheels: 14"
- clearance: 8 cm
- easily removable batteries
- weight without batteries 49 kg

**USE:**

For indoor and outdoor use but on a paved surface.

CE VITEA<sup>®</sup>  
CARE

Maximum speed (km/h)	9	Wheelchair height during transport (cm)	97
Seat width measured on the upholstery (cm)	40/45	Front wheels	9"
Seat width measured between the sides (cm)	48/53	Rear wheels	14"
Seat depth measured on the upholstery (cm)	45	Max obstacle to overcome (cm)	9
Backrest height (cm)	45	Turning radius (cm)	96
Total wheelchair height (cm)	97	Range* (km)	20
Lower leg support length: min/max (cm)	39/46	Maximum capacity (kg)	120
Armrest height measured from the seat upholstery (cm)	18 - 28	Batteries (Ah)	2 x 35
Seat cushion height (cm)	5	Motor (W)	2 x 300
Front height of the seat (with the cushion) (cm)	52		
Total wheelchair width (cm)	60/65		
Total length of the wheelchair with footrests (cm)	110		
Wheelchair weight with/without the batteries (kg)	70/49		

\* Speed, maximum distance of the vehicle depends on the user weight, tire pressure, battery load, battery capacity and the terrain on which the vehicle is used. The estimated range refers to laboratory conditions.

# LIMBER *power wheelchair*

catalogue number **W1018**

## PRODUCT CHARACTERISTICS:

- seat width: 16" and 18"
- amortized frame (rear frame with shock absorption)
- removable and breathable grey upholstery and seat cushion
- tiltable and adjustable backrest
- removable and adjustable armrest
- tiltable joystick position
- removable and tiltable footrest
- adjustable length of the lower leg support
- complete LED road safety lights
- electromagnetic brake
- controller: VS/PG50A
- adjustable anti-tipping rear wheels
- front wheels: 9"
- rear wheels: 14"
- clearance: 8 cm
- weight without batteries 49 kg

## USE:

For indoor and outdoor use.



CE VITEA<sup>®</sup>  
CARE

Maximum speed (km/h)	9	Wheelchair height during transport (cm)	67
Seat width measured on the upholstery (cm)	40/45	Front wheels	9"
Seat width measured between the sides (cm)	44/49	Rear wheels	14"
Seat depth measured on the upholstery (cm)	45	Max obstacle to overcome (cm)	9
Backrest height (cm)	45	Turning radius (cm)	96
Total wheelchair height (cm)	102	Range* (km)	25
Lower leg support length: min/max (cm)	39 - 46	Maximum capacity (kg)	120
Armrest height measured from the seat upholstery (cm)	18-28	Batteries (Ah)	2 x 38
Seat cushion height (cm)	5	Motor (W)	2 x 300
Front height of the seat (with the cushion) (cm)	49	Backrest angle adjustment range	40°
Total wheelchair width (cm)	60/65		
Total length of the wheelchair with footrests (cm)	108		
Wheelchair weight with/without the batteries (kg)	71/49		

\* Speed, maximum distance of the vehicle depends on the user weight, tire pressure, battery load, battery capacity and the terrain on which the vehicle is used. The estimated range refers to laboratory conditions.



## MODERN

## power wheelchair

catalogue number **PCBL 1600/1800**

### PRODUCT CHARACTERISTICS:

- seat width: 16" and 18"
- modern aluminium structure
- foldable backrest
- seat and backrest depth and tilt angle adjustment
- removable upholstery
- soft foam cushion
- anti-fall belt
- removable and tiltable footrest
- footrest and armrest height adjustment
- smart electromagnetic braking system
- pantograph and tiltable joystick position (optional)
- control unit mounted on the right or left side upon request
- caregiver control unit mounted on the right or left side upon request (optional)
- electric motor on/off feature
- complete LED lights
- pneumatic wheels (9" front, 14" rear)
- foldable anti-tipping rear wheels with shock absorption
- aluminium rims
- easily removable batteries
- available options: footrest angle adjustment, crutch holder
- headrest (optional)

### USE:

For outdoor and indoor use.



Maximum speed (km/h)	12	Wheelchair height during transport (cm)	80
Seat width measured on the upholstery (cm)	40/45	Front wheels	9"
Seat width measured between the sides (cm)	48/53	Rear wheels	14"
Seat depth measured on the upholstery (cm)	46	Max obstacle to overcome (cm)	9
Backrest height (cm)	52	Turning radius (cm)	96
Total wheelchair height (cm)	104	Range* (km)	25
Lower leg support length: min/max (cm)	43 - 48	Maximum capacity (kg)	136
Armrest height measured from the seat upholstery (cm)	22 - 27	Batteries (Ah)	2 x 50
Seat cushion height (cm)	5	Motor (W)	2 x 300
Front height of the seat (with the cushion) (cm)	52	Backrest angle adjustment range	40°
Total wheelchair width (cm)	59,5		
Total length of the wheelchair with footrests (cm)	115		
Wheelchair weight with/without the batteries (kg)	83/60		

\* Speed, maximum distance of the vehicle depends on the user weight, tire pressure, battery load, battery capacity and the terrain on which the vehicle is used. The estimated range refers to laboratory conditions.

## DE LUXE *power wheelchair*

catalogue number **PCBL 1610/1810**

### PRODUCT CHARACTERISTICS:

- seat width: 16" and 18"
- aluminium frame
- seat depth and width adjustment
- electrical adjustment of the seat tilt angle
- electrical adjustment of the backrest tilt angle
- soft foam cushion
- height adjustable armrest
- anti-fall belt
- removable and tiltable footrest with height adjustment
- footrest length adjustment
- independent electrical footrest adjustment
- complete road safety lights (LED bulbs)
- electromagnetic brake
- multifunctional control unit
- control unit mounted on the right or left side upon request
- caregiver control unit mounted on the right or left side upon request
- headrest adjustable in horizontal and vertical axes
- set of mudguards
- pantograph
- pneumatic wheels (9" front, 14" rear)
- aluminium rims
- foldable anti-tipping rear wheels



CE VITEA<sup>®</sup>  
CARE

### USE:

For outdoor and indoor use.

Maximum speed (km/h)	10	Wheelchair height during transport (cm)	80
Seat width measured on the upholstery (cm)	40/45	Front wheels	9"
Seat width measured between the sides (cm)	43/48	Rear wheels	14"
Seat depth measured on the upholstery (cm)	46	Turning radius (cm)	96
Backrest height (cm)	52	Range* (km)	20
Total wheelchair height (cm)	125	Maximum capacity (kg)	136
Lower leg support length: min/max (cm)	43,5 - 59	Batteries (Ah)	2 x 50
Armrest height measured from the seat upholstery (cm)	22 - 27	Motor (W)	2 x 300
Seat cushion height (cm)	5	Seat angle adjustment range	20°
Front height of the seat (with the cushion) (cm)	54	Backrest angle adjustment range	45°
Total wheelchair width (cm)	59/64		
Total length of the wheelchair with footrests (cm)	104		
Wheelchair weight with/without the batteries (kg)	119/90		

\* Speed, maximum distance of the vehicle depends on the user weight, tire pressure, battery load, battery capacity and the terrain on which the vehicle is used. The estimated range refers to laboratory conditions.



## DE LUXE LIFT

## power wheelchair

catalogue number **PCBL 1600/1800**

### PRODUCT CHARACTERISTICS:

- aluminium frame
- wheelchair designed for home- and terrain-use with double shock absorbing system
- speed 10 km/h
- seat depth and width adjustment
- electrical adjustment of the seat and backrest angle
- removable and tiltable footrest with electrically adjustable tilt angle
- electrically adjustable seat height up to 30 cm (elevator)
- seat cushion
- lights
- foldable anti-tipping wheels
- height adjustable armrest
- headrest with adjustable position
- lap safety belt

### USE:

Multi-position wheelchair for outdoor and indoor use.



Maximum speed (km/h)	10	Wheelchair height during transport (cm)	80
Seat width measured on the upholstery (cm)	40/45	Front wheels	9"
Seat width measured between the sides (cm)	47-53	Rear wheels	14"
Seat depth measured on the upholstery (cm)	47	Max obstacle to overcome (cm)	9
Backrest height (cm)	57	Turning radius (cm)	140
Total wheelchair height (cm)	110 - 140	Range* (km)	25
Lower leg support length: min/max (cm)	43,5 - 59	Maximum capacity (kg)	160
Armrest height measured from the seat upholstery (cm)	24	Batteries (Ah)	2 x 75
Seat cushion height (cm)	6	Motor (W)	2 x 450
Front height of the seat (with the cushion) (cm)	49	Backrest angle adjustment range	25 °
Total wheelchair width (cm)	64	Seat angle adjustment range	45 °
Total length of the wheelchair with footrests (cm)	119/124		
Wheelchair weight with/without the batteries (kg)	119/90		

\* Speed, maximum distance of the vehicle depends on the user weight, tire pressure, battery load, battery capacity and the terrain on which the vehicle is used. The estimated range refers to laboratory conditions.



# HERO STAND UP

## power wheelchair

catalogue number **DRVM6C**

### PRODUCT CHARACTERISTICS:

- seat width: 16" and 18"
- electrical verticalization using controller
- upholstery made of leather artificial
- lifted armrests
- armrest height and tilt angle adjustment
- footrest height adjustment with calf support
- anti-tipping wheels (rear and front)
- complete, road safety lights
- knee strap
- 3-point safety belts
- safety lap belt
- headrest
- knee strap
- electromagnetic brake
- front wheels: 9"
- rear wheels: 14"
- rear shock absorbers

### USE:

Electric wheelchair for indoor use with the possibility of verticalization.



CE VITEA CARE

Maximum speed (km/h)	9,5	Wheelchair height during transport (cm)	88
Seat width measured on the upholstery (cm)	40/45	Front wheels	9"
Seat width measured between the sides (cm)	42/47	Rear wheels	14"
Seat depth measured on the upholstery (cm)	43	Max obstacle to overcome (cm)	2/9
Backrest height (cm)	51	Turning radius (cm)	90
Total wheelchair height (cm)	120 - 162	Range* (km)	20
Lower leg support length: min/max (cm)	42 - 48	Maximum capacity (kg)	120/135
Armrest height measured from the seat upholstery (cm)	22	Batteries (Ah)	2 x 55
Seat cushion height (cm)	8,5	Motor (W)	2 x 450
Front height of the seat (with the cushion) (cm)	56		
Total wheelchair width (cm)	64 (18")		
Total length of the wheelchair with footrests (cm)	114		
Wheelchair weight with/without the batteries (kg)	95/63		

\* Speed, maximum distance of the vehicle depends on the user weight, tire pressure, battery load, battery capacity and the terrain on which the vehicle is used. The estimated range refers to laboratory conditions.

**POSITIONS**

*hero stand up*



**DRIVING**



**VERTICALIZING**

## MINI

catalogue number **W4026**

### PRODUCT CHARACTERISTICS:

- scooter-type road wheelchair
- easy to use, simple and intuitive control panel
- innovative design
- easy battery disassembly
- possibility of charging the batteries after removing them from the wheelchair
- easy folding of the wheelchair without the need for keys
- road safety lights
- bumpers
- wheels: 9", aluminum rims
- seat height adjustment
- rotary and lockable chair
- tiltable armrests
- steering column tilt angle adjustment
- shopping basket mounted on the steering column

### USE:

Wheelchair designed for individuals with mobility limitations for outdoor use.



CE VITEA<sup>®</sup>  
CARE

Batteries	12V/20Ah x 2	Wheelchair weight with/without the batteries (kg)	68/64
Charger (V)	24V/2A	Motor (W)	200
Maximum speed (km/h)	7	Seat width (cm)	41
Maximum elevation angle	15 °	Seat depth (cm)	39
Turning radius (cm)	165	Backrest height (cm)	37
Wheelchair length (cm)	123	Maximum capacity (kg)	120
Wheelchair width (cm)	51	Range* (km)	18
Ground clearance (cm)	8	Dimensions (cm)	1100x510x980

\* Speed, maximum distance of the vehicle depends on the user weight, tire pressure, battery load, battery capacity and the terrain on which the vehicle is used. The estimated range refers to laboratory conditions.

## RIDER II *power wheelchair*

catalogue number **W 4025**

### PRODUCT CHARACTERISTICS:

- rotary chair horizontal axis adjustment
- backrest tilt angle adjustment
- handlebar angle adjustment
- complete, LED road safety lights
- set of rear-view mirrors
- shopping basket
- seat belt preventing falling out
- headrest
- electromagnetic brake
- front and rear bumper
- clutch for disconnecting the electrical drive
- compact size
- front wheels: 11.5"
- rear wheels: 11.5"

### USE:

Wheelchair designed for individuals with mobility limitations for outdoor use.



Maximum speed (km/h)	12	Wheelchair height during transport (cm)	64
Seat width measured on the upholstery (cm)	46	Front wheels	11,5"
Seat width measured between the sides (cm)	52 - 62	Rear wheels	11,5"
Seat depth measured on the upholstery (cm)	42	Max obstacle to overcome (cm)	11
Backrest height (cm)	51	Turning radius (cm)	124"
Total wheelchair height (cm)	108	Range* (km)	25
Armrest height measured from the seat upholstery (cm)	20	Maximum capacity (kg)	120
Front height of the seat (with the cushion) (cm)	45	Batteries (Ah)	2 x 40
Total wheelchair width (cm)	60	Motor (W)	400
Total length of the wheelchair (cm)	127	Ground clearance (cm)	6,5
Wheelchair weight with/without the batteries (kg)	92/60		

\* Speed, maximum distance of the vehicle depends on the user weight, tire pressure, battery load, battery capacity and the terrain on which the vehicle is used. The estimated range refers to laboratory conditions.



## CRUISER II

## power wheelchair

catalogue number: **PW4028**

### PRODUCT CHARACTERISTICS:

- modern design
- rotary chair horizontal axis adjustment
- backrest tilt angle adjustment
- handlebar angle adjustment
- set of rear-view mirrors
- shopping basket
- seat belt preventing falling out
- headrest
- complete, road safety lights
- electromagnetic brake
- clutch for disconnecting the electrical drive
- front and rear bumper
- front wheels: 13"
- rear wheels: 13"
- complete shock absorbing system (4 shock absorbers)

### USE:

Wheelchair designed for individuals with mobility limitations for outdoor use.



Maximum speed (km/h)	15	Wheelchair height during transport (cm)	64
Seat width measured on the upholstery (cm)	47	Front wheels	13"
Seat width measured between the sides (cm)	49 - 58	Rear wheels	13"
Seat depth measured on the upholstery (cm)	43,5	Max obstacle to overcome (cm)	11
Backrest height (cm)	50	Turning radius (cm)	165"
Total wheelchair height (cm)	112	Range* (km)	30
Armrest height measured from the seat upholstery (cm)	19	Maximum capacity (kg)	140
Front height of the seat (with the cushion) (cm)	53	Batteries (Ah)	2 x 55
Total wheelchair width (cm)	64	Motor (W)	800
Total length of the wheelchair (cm)	148	Ground clearance (cm)	7,5
Wheelchair weight with/without the batteries (kg)	134/99		

\* Speed, maximum distance of the vehicle depends on the user weight, tire pressure, battery load, battery capacity and the terrain on which the vehicle is used. The estimated range refers to laboratory conditions.

**WAY***power add-on  
device*catalogue number: **DRVK0M**

The picture below is for illustrative purposes only. Way attached to exemplary wheelchair with fixed frame.



CE VITEA<sup>®</sup>  
CARE


**USE:**

Rear drive (thrust) to facilitate the mobility of the wheelchair.


Motor (W)	400
Batteries (Ah)	24V / 6,6 (lit.)
Maximum speed (km/h)	7,5
Wheel (")	10
Weight (kg)	7

\* Speed, maximum distance of the vehicle depends on the user weight, tire pressure, battery load, battery capacity and the terrain on which the vehicle is used. The estimated range refers to laboratory conditions.





# **VERTICALIZING SYSTEM**





# PSL

## *static parapodium light*

model PSL

### PRODUCT CHARACTERISTICS:

- lightweight, safe, user-friendly, providing reliable support for patients undergoing verticalization therapy
- made of lightweight, durable materials, such as aluminum profiles, thin-walled steel profiles, connected with flexible and lightweight plastic joints
- foot platform and heel counters provide stable support
- adjustable knee support of anatomical shape
- hip support with torso belt stabilises hip joints, whereas arm supports keep the patient's torso in vertical position
- all elements of parapodium, which directly contact the patient's body, are provided with soft, hypo-allergenic, slow-burning upholstery made of velour
- four wheels with brakes
- fastener which helps the patient to fasten the vest on their own
- vest available in two sizes
- optionally: wedge to balance different length of the patient's lower limbs, additional side cushions, table with adjustable height and angle



### USE:

This equipment is mainly used to provide verticalization of a patient, stabilize lower extremities and torso of a patient between 150 and 180 cm and frees the upper limbs from supporting function; moreover in cases of paralysis and paresis of extremities - traumatic injuries, congenital defect, acquired spinal cord disorders from C4, motor system dysfunctions - paralyse, paresis, progressive muscular dystrophy.

CE VITEA<sup>®</sup>  
CARE

Vest	narrow	wide
Vest width (cm)	44	49
Vest depth (cm)	34	37
Parapodium width (cm)	74	74
Parapodium length (cm)	100	88
Parapodium height (cm)	115	115
Height (cm)	150 - 180	150 - 180
Maximum capacity (kg)	100	100



## PST *static parapodium*

model **PST** with table, **PSS** without table

### PRODUCT CHARACTERISTICS:

- device combines the features of TLSO and HKAFO orthoses
- very good front and side stabilisation of the torso
- height, width and centre of gravity adjustment
- skid-like feet platforms
- arched front knee clamps
- backwards opening lap belt
- skids with tips
- wide adjustment range
- optionally: foot stabilising belts, reinforced knee straps, wedge to balance different length of the patient's lower limbs, additional side cushions, head stabilizing element, table with adjustable height and tilt angle

### USE:

Rehabilitation and everyday use equipment designed for patients with paraplegia, tetraplegia, myelomeningocele, infantile cerebral palsy.



Vest	100	125	150	180	200
Vest width (cm)*	21 - 27	25 - 36	29 - 43	37 - 61,5	37 - 61,5
Vest depth (cm)*	16,5 - 21	20 - 26	23 - 34	26 - 38	29 - 41
Parapodium width (cm)	50 - 56	55 - 68	61 - 72	67 - 91	67 - 91
Parapodium length (cm)	77 - 97	77 - 97	91 - 115	91 - 115	91 - 115
Parapodium height (cm)	67 - 85	80 - 99	98 - 124	123 - 160	133 - 170
Height (cm)	85 - 105	105 - 125	125 - 155	155 - 185	185 - 205
Maximum capacity (kg)	30	50	70	90	110

\* measurements without upholstery

## GYM *static parapodium*

model **PSN**

### PRODUCT CHARACTERISTICS:

- device combines the features of TLSO and HKAFO orthoses
- very good front and side stabilisation of the torso
- height, width and centre of gravity adjustment
- skid-like feet platforms with safety belts
- arched front knee clamps
- backwards opening lap belt
- four caster wheels with lockable rear ones
- modern design
- optionally: wedge to balance different length of the patient's lower limbs, table with adjustable height and angle, possibility of changing wheels for larger ones (increased clearance), rear belt

### USE:

Rehabilitation and everyday use equipment designed for patients with paraplegia, tetraplegia, myelomeningocele, infantile cerebral palsy.



CE VITEA<sup>®</sup>  
CARE

Hip width (cm)	32 - 57
Hip depth (cm)	22 - 37
Parapodium width (cm)	66,5 - 91,5
Parapodium length (cm)	92
Parapodium height (cm)	122 - 155
Maksymalne obciążenie (kg)	110
Height (cm)	160 - 200



## MOBILE PARAPODIUM

model **PJMP** with table, **PJM** without table

### PRODUCT CHARACTERISTICS:

- stable structure enabling movement without assistance of a caregiver
- base with caster wheels with brakes
- equipment available with two types of a vest: with/without side supports (model without side supports is designed for patients with better physical performance, who do not require using torso support)
- provided with special “pants” protecting the patient against falling down, adjustable to individual size
- lower limbs separator to improve walking performance
- optionally: wrist straps, rear belt, additional side cushions, table with adjustable height and angle

### USE:

Designed for patients with balance disorders or partially functional lower limbs.



	100	125	150	180	200
Vest	21 - 27	25 - 36	29 - 43	37 - 61,5	37 - 61,5
Vest width (cm)*	16,5 - 21	20 - 26	23 - 34	26 - 38	29 - 41
Vest depth (cm)*	50 - 58	55 - 67	68 - 83	75 - 102	75 - 102
Parapodium width (cm)	82	82	84	84	84
Parapodium length (cm)	64 - 82	72 - 91	89 - 116	115 - 152	125 - 167
Parapodium height (cm)	85 - 105	105 - 125	125 - 155	155 - 185	185 - 205
Height (cm)	30	50	70	90	110

Maximum capacity (kg)

\* measurements without uphol-

# COMBO

## *dynamic parapodium*

model **PJMC**

### PRODUCT CHARACTERISTICS:

- equipment comprising one vest and two bases: static and mobile
- unique adjustment range provides complete adaptation to individual sizes of patient
- stable structure with reliable mechanical solutions used in Dynamic Parapodium enables safe and comfortable use by a patient held in vertical position, and as the rehabilitation treatment progresses, enables possibility to move
- optionally: foot stabilising belts, reinforced knee straps, wrist straps, wedge to balance different length of the patient's lower limbs, additional side cushions, table with adjustable height and angle

### USE:

Combo dynamic parapodium is designed for patients wishing to combine functionalities of static and mobile parapodium. The equipment is helpful for patients with different types and severity of dysfunctions. It is also a very good equipment to be used in medical centres, where wide range of treatment for different groups of patients is offered.



CE VITEA<sup>®</sup>  
CARE

	100	125	150	180	200
Vest width (cm)*	21 - 27	25 - 36	29 - 43	37 - 61,5	37 - 61,5
Vest depth (cm)*	16,5 - 21	20 - 26	23 - 34	26 - 38	29 - 41
Parapodium width (static platform) (cm)	50 - 56	55 - 68	61 - 72	67 - 91	67 - 91
Parapodium length (static platform) (cm)	77 - 97	77 - 97	91 - 115	91 - 115	91 - 115
Parapodium height (static platform) (cm)	67 - 85	80 - 99	98 - 124	123 - 160	133 - 170
Parapodium width (dynamic platform) (cm)	50 - 58	55 - 67	68 - 83	75 - 102	75 - 102
Parapodium length (cm)	82	82	84	84	84
Parapodium height (cm)	64 - 82	72 - 91	89 - 116	115 - 152	125 - 167
Height (cm)	85 - 105	105 - 125	125 - 155	155 - 185	185 - 205
Maximum capacity (kg)	30	50	70	90	110

\* measurements without upholstery



PD

*dynamic parapodium*

model PD

**PRODUCT CHARACTERISTICS:**

- device combines the features of TLSO and HKAFO orthoses
- enables movement (via torso balancing) of a patient with lower limbs paresis
- good front and side stabilisation of the torso
- skid-like feet platforms (lower back fulcrum)
- arched front knee clamps (central fulcrum)
- backwards open lap belt (upper back and front fulcrum)
- very wide adjustment range to adapt device and provide comfortable and safe use
- optionally: foot stabilising belts, reinforced knee straps, wrist straps, wedge to balance different length of the patient's lower limbs, rear belt, additional side cushions

**USE:**

Rehabilitation and everyday use equipment particularly designed for patients with paraplegia, myelomeningocele, infantile cerebral palsy. It is helpful in broadly defined rehabilitation involving verticalization and independent movement of a patient without any assistance of a caregiver.

CE VITEA<sup>®</sup>  
CARE

	100	125	150	180	200
Vest width (cm)*	21 - 29	25 - 35	29 - 43	37 - 61,5	37 - 61,5
Vest depth (cm)*	16,5 - 23	20 - 28	23 - 34	26 - 38	29 - 41
Parapodium width (cm)	42,5 - 58	48 - 68	53 - 83	62 - 99	62 - 99
Parapodium length (cm)	58 - 61	64 - 70	83 - 88	83 - 88	83 - 88
Parapodium height (cm)	66 - 86	77 - 96	93 - 120	118 - 155	128 - 165
Height (cm)	85 - 105	105 - 125	125 - 155	155 - 185	185 - 205
Maximum capacity (kg)	20	25	70	90	110

\* measurements without upholstery

# GYM

## *dynamic parapodium*

model PDN

### PRODUCT CHARACTERISTICS:

- modern, stable and aesthetic structure
- correct stabilisation of the limbs and torso
- wide adjustment range to adapt the equipment to actual needs and condition of a patient, adjustable height, width and centre of gravity; vest and handles height adjustment
- construction ensures safe and correct vertical position and movement (treading) of patients with lower limbs paralysis
- possible adjustment of tread length
- backwards open lap belt with modern, failure-free fastener
- additional torso stabilising belt
- foot platforms with stabilising belts and position adjustment
- adjustable knee pads to stabilise lower limbs and enables their correct balance
- optionally: wrist straps, wedge to balance different length of the patient's lower limbs

### USE:

Rehabilitation and everyday use equipment particularly designed for patients with paraplegia, myelomeningocele, infantile cerebral palsy. It is helpful in widely understood rehabilitation involving verticalization and independent movement of a patient without any assistance of a caregiver.



CE VITEA<sup>®</sup>  
CARE

Vest	32 - 57
Vest width (cm)*	22 - 37
Vest depth (cm)*	59 - 92
Parapodium width (cm)	82 - 88
Parapodium length (cm)	120 - 153
Maximum capacity (kg)	110
Height (cm)	160 - 200

**BINGO***rehabilitative chair*catalogue number **DRVRX****PRODUCT CHARACTERISTICS:**

- chair made from wood
- seat depth and angle adjustment
- side supports adjustable in horizontal and vertical axes
- backrest adjustment, possible lying or sitting positions
- footrest length and tilt angle adjustments
- footrest with heel counters and straps
- horizontal axis and angle adjustments
- abduction wedge horizontal axis adjustment
- armrest horizontal axis and tilt angle adjustments
- height and tilt angle adjustable table for manual exercises and playing (with torso cutaway)
- chair with torso stabilising vest
- all casters wheels are lockable
- height adjustable headrest with possible enclosure around the occiput
- neck support vertical axis adjustment
- shelf under the seat

**USE:**

Designed for rehabilitation of disabled children, mainly suffering from nervous system disorders, who have difficulties in sitting without the care giver's assistance. Thanks to wide adjustment range the chair can be used by children with hypotonia and hypertonia.



Seat height (with headrest) (cm)	46 - 62
Seat depth (cm)	25 - 41
Footrest height (cm)	25 - 31
Armrest height from the basis (cm)	68 - 76
Seat width (cm)	15 - 35
Backrest width (cm)	15 - 27
Device width (cm)	58
Device length (cm)	95 - 150
Device weight (kg)	27
Maximum capacity (kg)	35



## SPRING/ SPEEDY

### *multifunctional rehabilitative device*

catalogue number **DRVF04**

#### **PRODUCT CHARACTERISTICS:**

- multifunctional device made from wood
- seat depth and angle adjustment
- side supports adjustable in horizontal and vertical axes
- smooth adjustment of the backrest tilt angle from sitting position 90° to lying position 0°, by using gas actuators
- seat smooth adjustment, tilt angle ranging from -15° to +80°, manual handling
- footrest height adjustment, footrest tilt angle gradual adjustment every 15° (7 positions) from 0° (horizontal position) to 90° (vertical position - as after product unpacking)
- foot platforms with heel counters and safety belts, possible adjustment in horizontal axis and angle adjustment
- abduction wedge horizontal axis adjustment
- armrest horizontal axis and tilt angle adjustment
- height and tilt angle adjustable table for manual exercises and playing (with torso cutaway)
- torso stabilising vest
- all casters wheels are lockable
- height adjustable headrest with possible enclosure around the occiput
- neck support vertical axis adjustment

#### **USE:**

Device designed mainly for children suffering from infantile cerebral palsy, myelomeningocele, muscle dystrophy, central nervous system injuries of different ethology. Thanks to its structure the patient can be positioned in vertical, sitting, lying and in-between positions. Multi-functionality and module structure allows it to be adapted to individual size and physical performance of a patient, as well as their individual treatment requirements.



Seat width (cm)	38 - 52
Backrest width (cm)	30 - 37
Device width (cm)	23 - 39
Device length (cm)	71 - 92
Seat width (cm)	40
Backrest width (cm)	15 - 27
Device width (cm)	60
Device length (cm)	75 - 150
Device weight (kg)	36
Maximum capacity (kg)	35



*SPRING*



*SPEEDY*

# RAINBOW/GATO

## *multifunctional rehabilitative device*

catalogue number **DRVB8**

### PRODUCT CHARACTERISTICS:

- multifunctional device made from wood
- seat depth and angle adjustment
- side supports adjustable in horizontal and vertical axes
- smooth adjustment of the backrest tilt angle from sitting position 90° to lying position 0°, by using controller
- seat smooth electric adjustment using controller, inclination angle ranging from -15° to +90°, manual handling
- footrest height adjustment, footrest gradual tilt angle adjustment every 15°, (7 positions) from 0° (horizontal position) to 90° (vertical position - as after product unpacking).
- foot platforms with heel counters and safety belts, possible adjustment in horizontal axis and angle adjustment
- abduction wedge horizontal axis adjustment
- armrest horizontal axis and tilt angle adjustment
- height and angle adjustable table for manual exercises and playing (with torso cutaway)
- torso stabilising vest
- all casters wheels are lockable
- height adjustable headrest with possible enclosure around the occiput
- neck support vertical axis adjustment

### USE:

Multifunctional device designed mainly for children suffering from infantile cerebral palsy, myelomeningocele, muscle dystrophy, central nervous system injuries of different ethology. Thanks to its structure the patient can be positioned in vertical, sitting, lying and in-between positions. Multi-functionality and module structure allows it to be adapted to individual size and physical performance of a patient, as well as their individual treatment requirements.




Seat width (cm)	38 - 52
Backrest width (cm)	30 - 37
Device width (cm)	23 - 39
Device length (cm)	71 - 92
Seat width (cm)	40
Backrest width (cm)	15 - 27
Device width (cm)	60
Device length (cm)	75 - 150
Device weight (kg)	43
Maximum capacity (kg)	35



*RAINBOW*



*GATO*

# SAMSON

## *transport lifting device*

catalogue number **DRVF02**

### PRODUCT CHARACTERISTICS:

- steering U-shaped handlebar
- frame with epoxy powder coating
- very easy assembly
- electric steering
- steering unit provided with emergency button
- provided with safety quick-lowering system to lower the patient in a safe way in case of battery discharge
- actuators made by certified manufacturer
- swivel front wheels
- lockable rear wheels
- adjustable base leg width
- additional equipment: wide range of user-friendly carriers, which ensure correct back stabilization: carrier with head stabilization for everyday use, carrier with head stabilization for bathing

### USE:

Samson lifting device is designed for transporting disabled people who require constant care. High quality and great functionalities make Samson invaluable aid in everyday care. Solid structure of the lifting device, as well as elastic and comfortable carrier, guarantee safe and convenient use both for the patients, and their caregivers.



*Carrier with head stabilization*

CE VITEA<sup>®</sup>  
CARE

Length (cm)	110
Width (cm)	58,5
Leg gate (cm)	58,5 - 80
Height (cm)	113
Lift reach (cm)	28
Lift range (cm)	74 - 177,5
Lift speed (cm)	3,8
Front wheels diameter (cm)	7,5
Rear wheels diameter (cm)	10
Maximum capacity (kg)	150

**DAVID***transport lifting device*catalogue number **DRVF123AL1XXP****PRODUCT CHARACTERISTICS:**

- frame made of high quality steel with powder coating finish
- very easy assembly
- electric steering via controller
- steering unit provided with emergency button
- lifting device provided with safety lowering system to mechanically lower the patient in case of battery discharge
- actuators and batteries made by certified manufacturers
- swivel front wheels
- lockable rear wheels
- device base width adjustment
- simple folding system, no tools required
- compact structure and size
- carrier with head stabilization for everyday use

**USE:**

Thanks to compact structure and small size, David lifting device is designed for transporting patients both in medical centres, and at home. Very functional and easily foldable, useful for transport and storing.

CE VITEA<sup>®</sup>  
CARE

Length (cm)	95
Width (cm)	52 - 68
Leg gate (cm)	58,5 - 80
Height (cm)	113
Lift reach (cm)	28
Lift range (cm)	74 - 177,5
Lift speed (cm)	3,8
Front wheels diameter (cm)	7,5
Rear wheels diameter (cm)	10
Maximum capacity (kg)	150

## CAPRI *bath lift*

catalogue number **3013622**

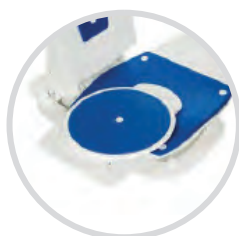
### PRODUCT CHARACTERISTICS:

- only 1-hour charging time thanks to lithium ion manganese batteries placed in a lightweight controller
- easy assembly and disassembly into 5 parts (no additional tools required)
- removable electric parts to facilitate cleaning
- stable seat thanks to well shaped surface
- seat surface made of plastic to prevent slipping down
- easy-to-clean silver-ion antimicrobial plastic
- optional blue bacteriostatic and anti-slipping overlays
- color: white

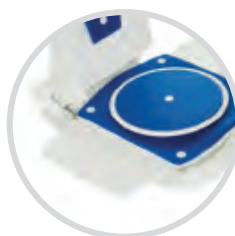
### OPTIONS:



**anti- skidding handles**



**VIA**



**LUNA**



CE VITEA<sup>®</sup>  
CARE

Lenght (cm)	42
Weight (kg)	130
Seat width without side flaps (cm)	72,1
Seat width with side flap (cm)	12,9
Backrest height (cm)	37,5
Backrest width (cm)	70,5
Minimum seat height (cm)	67,5
Maksimum seat height (cm)	35
Maximum capacity (kg)	7,2



**ANTI BEDSORE  
AND SANITARY AID**



**REST**

## *pneumatic anti bedstore cushion*

 catalogue number **DRVCT**
**PRODUCT CHARACTERISTICS:**

- innovative, patented solution: combination of memory foam and air chambers. System responsible for proper weight distribution prevents skin irritation, abrasions and bedsores.
- cover made of breathable, perforated and knitted fabric to provide comfortable use and easy maintenance (removable cover)
- anti-slipping insertion to prevent the cushion from sliding down the chair
- adjustable pressure in air chambers to adapt cushion softness and height to the body shape
- pumping and air releasing valve, no need to use a separate pump

**USE:**

Prevents skin sores and irritation caused by prolonged sitting position, provides lumbar region relief and forces correct pelvis position to prevent lower back pain.




Length (cm)	38	40	45
Width(cm)	40	40	40
Height (cm)	8	8	8
Maximum capacity (kg)	150	150	150

**COMFY***pneumatic anti bed sore cushion*catalogue number **DRVT****PRODUCT CHARACTERISTICS:**

- cushion made of elastic chambers coupled with each other and filled with air (using a pump)
- cover made of breathable, perforated and knitted fabric to provide comfortable use and easy maintenance (removable cover)
- anti-slipping surface to prevent the cushion from sliding down the chair
- adjustable pressure in air chambers to adapt cushion softness and height to the body shape
- two versions available: cushion with a single valve and coupled chambers, and cushion with two valves and two chamber sections (the air can be filled in different amount at the back and front part of the cushion)

**USE:**

Prevents skin sores and irritation caused by prolonged sitting position, provides lumbar region relief and forces correct pelvis position to prevent lower back pain.

CE VITEA<sup>®</sup>  
CARE

Height (cm)

6

8

Width x lenght. / valves

36 x 40 /1

40 x 40/1

40 x 40/1

40 x 40/2

40 x 40/2

46 x 40/1

Maximum capacity (kg)

130

130

# ANTI BEDSORE MATTRESS

catalogue number **VCM202**

catalogue number **VCM202B**

## PRODUCT CHARACTERISTICS:

- bubble structure, pressure swing mattress made of PVC
- smooth, manual pressure adjustment, individually adapted according to the patient's weight
- operation cycle: 12 minutes (VCM202) and 10 minutes (VCM202B)
- quiet electric pump
- can be placed on standard bed mattress
- repair kit provided
- color: beige

## USE:

Bedsore prevention and treatment.



**VCM202**



**VCM202B (different pump)**

CE VITEA<sup>®</sup>  
CARE

Length (cm)	202
Width (cm)	90
Height (cm)	7
Maximum capacity (kg)	120
Weight (kg)	2
Weight of pressure pump (kg)	1,1

# BUBBLE MASTER

## *anti bedsore mattress*

catalogue number **VCM202G**

### PRODUCT CHARACTERISTICS:

- pneumatic, alternating pressure, anti-bedsore mattress
- bubble structure made of PVC, can be stably mounted on the elastic sanitary bed protection
- smooth, manual pressure adjustment, individually adapted according to the patient's weight
- modern, quiet electric pump
- thanks to the mattress structure based on separate air chambers, patient's weight is evenly distributed, the mattress provides correct ventilation, great insulation properties guarantee temperature comfort
- operation cycle: 12 minutes
- can be placed on standard bed mattress
- repair kit provided
- color: beige

### PERFECT FOR USE IN:

Bedsore prevention and treatment.



Length (cm)	195	Weight (kg)	2
Width (cm)	90	Weight of pressure pump (kg)	1,4
Height (cm)	6,5	Maximum capacity (kg)	140
Power supply	220-230 V/50 HZ		
Work cycle	12 min		

# ANTI BEDSORE MATTRESS

*alternating pressure mattress  
of tubular structure*

catalogue number **VCM502**

## PRODUCT CHARACTERISTICS:

- alternating pressure, anti-bedsore mattress, with the highest number of chambers, made of PVC
- smooth manual pressure adjustment, individually adapted according to the patient's weight
- operation cycle: 10 minutes
- quiet electric pump
- can be placed on standard bed mattresses
- 1 extra chamber
- cover
- color: dark blue

## USE:

Bedsore prevention and treatment.



CE VITEA<sup>®</sup>  
CARE

Length (cm)	190
Width (cm)	85
Height (cm)	11
Maximum capacity (kg)	140
Weight (kg)	3,4
Weight of pressure pump (kg)	1,3

# TUBE MASTER

## anti bedsore mattress

catalogue number **VCM502D**

### PRODUCT CHARACTERISTICS:

- pneumatic, alternating pressure, anti-bedsore mattress
- tube structure with 18 chambers in two rows arrangement alternately filled with air, with a cover
- made of nylon, to facilitate cleaning
- smooth, manual pressure adjustment, individually adapted according to the patient's weight
- thanks to the mattress structure based on separate air chambers, patient's weight is evenly distributed, the mattress provides correct ventilation (oxygenation and drainage of moisture), great insulation properties guarantee temperature comfort
- number of chambers: 18
- operation cycle: 12 minutes
- modern, quiet electric pump
- can be placed on standard bed mattresses
- color: dark blue

### USE:

Bedsore prevention and treatment.



Length (cm)	200	Work cycle	12 minut
Width (cm)	90	Amount of air pumped	6-8 l/min
Height (cm)	11,5	Weight (kg)	4
Maximum capacity (kg)	145	Weight of pressure pump (kg)	1,2
Power supply	220-240 V/50-60 HZ		

# TUBE LIGHT

## *anti bedstore mattress*

catalogue number **VCM502F**

### PRODUCT CHARACTERISTICS:

- tube structure, alternating pressure, anti-bedstore mattress
- smooth manual pressure adjustment, individually adapted according to the patient's weight
- operation cycle: 6 minutes
- can be placed on standard bed mattresses
- 1 extra chamber
- rapid deflation valve
- repair kit
- cover

### USE:

Bedsore prevention and treatment.



CE VITEA CARE

Length (cm)	190
Width (cm)	85
Height (cm)	11
Maximum capacity (kg)	140
Weight (kg)	3,4
Weight of pressure pump (kg)	1,3

# BACK SUPPORT

catalogue number **DRVF01**

## PRODUCT CHARACTERISTICS:

- made of durable aluminum frame secured with non-toxic varnish coating
- simple adjustment system enables five different height configurations of the back support
- made of easy to clean material

## USE:

Back support that facilitates hygiene and handling (e.g. feeding) of a lying patient. It allows to maintain a semi-sitting position, which ensures passive upright correction and prevents the effects of prolonged immobilization. It improves the patient's comfort.



comfortable cushion



adjustable frame



CE VITEA<sup>®</sup>  
CARE



## BATH BENCH

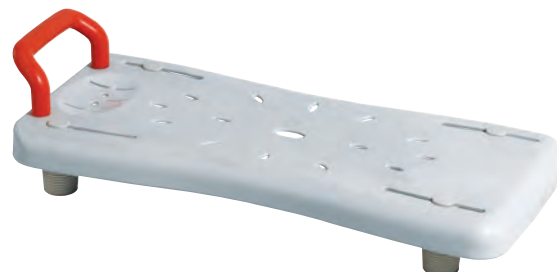
catalogue number **DRVW048**

### PRODUCT CHARACTERISTICS:

- bath bench made of plastic
- handlebar facilitating use of the bench
- outflow holes
- legs spacing smooth adjustment

### USE:

Bath bench to facilitate going into and out of the bathtub. Useful for patients with mobility limitations wishing to perform personal hygiene activities. Moreover, it provides secure bathing position for patients suffering from limited hip joint mobility e.g. hip joint endoprosthetics.



CE VITEA<sup>®</sup>  
CARE

Adjustment of leg stops width

41 - 63

Maximum capacity (kg)

100

## BATH BENCH

catalogue number **DRVW042**

### PRODUCT CHARACTERISTICS:

- aluminum frame
- seat made of easily washable plastic
- outflow holes
- handles spacing gradual adjustment

### USE:

Bath bench to facilitate going into and out of the bathtub. Useful for patients with mobility limitations wishing to perform personal hygiene activities. Moreover, it provides secure bathing position for patients suffering from limited hip joint mobility e.g. hip joint endoprosthetics.



CE VITEA<sup>®</sup>  
CARE

Adjustment of handles spacing (cm)

62 - 70

Maximum capacity (kg)

100

## BLU *small shower stool*

catalogue number **VCPT0011**

### PRODUCT CHARACTERISTICS:

- non-slip mat ensures comfortable and safe use
- rotary seat that enables user to turn around without need to stand up
- gradual 5-step adjustment every 2.5 cm
- non-slip legs tips prevent bathtub scratches and uncontrollable movements of the stool during use
- force of rotation adjusted to prevent unwanted turning while sitting on the stool

### USE:

Professional aid to enable/facilitate taking a bath.



CE VITEA<sup>®</sup>  
CARE

Maximum capacity (kg)	110
Weight (kg)	2,2
Height (cm)	43 - 53
Width (cm)	43
Seat diameter (cm)	28

## SMALL SHOWER STOOL

catalogue number **VCTP0011**

### PRODUCT CHARACTERISTICS:

- aluminium structure
- seat made of easily washable polyurethane with handles
- outflow holes
- gradual height adjustment every 2.5 cm

### USE:

Professional aid to enable/facilitate taking a bath.



CE VITEA<sup>®</sup>  
CARE

Height (cm)	37 - 56
Width (cm)	48
Depth	29
Weight (kg)	2
Maximum capacity (kg)	100

## SMALL SHOWER STOOL

catalogue number **VCTP0011**

### PRODUCT CHARACTERISTICS:

- aluminium structure
- seat made of easily washable polyurethane
- gradual height adjustment every 2.5 cm

### USE:

Professional aid to enable/facilitate taking a bath.



CE VITEA<sup>®</sup>  
CARE

Height (cm)	35 - 53
Width (cm)	32
Weight (kg)	1,22
Seat diameter (cm)	100

## SHOWER SEAT

catalogue number **VCTP0021**

### PRODUCT CHARACTERISTICS:

- aluminium structure
- seat and backrest made of easily washable polyurethane
- handles for easy use
- outflow holes
- gradual height adjustment every 2.5 cm

### USE:

Professional aid to enable/facilitate taking a bath.



CE VITEA<sup>®</sup>  
CARE

Height (cm)	45 - 56
Width (cm))	51
Depth (cm)	29
Weight (kg)	2,95
Maximum capacity (kg)	100

# COMMUNE CHAIR

catalogue number **DRVW01**

## PRODUCT CHARACTERISTICS:

- plastic seat
- steel structure
- soft armrests
- gradual height adjustment
- 5L bucket with a cover
- toilet seat with a cover

## USE:

Product useful in care over patient with limited mobility. Allows the patient to use the toilet in a sitting position. Facilitates performing of care activities. A chair without a bucket can be placed over the toilet bowl.



**soft armrests**



**anti-slip  
protection tips**

CE VITEA<sup>®</sup>  
CARE

	<b>DRVW01</b>	<b>DRVW02</b>
Height (cm)	64 - 79	60 - 70
Width (cm)	56	55
Length (cm)	53	54
Width (cm)	46	42
Seat depth (cm)	45	45
Weight	7	6
Maximum capacity (kg)	100	100

## RAISED TOILET SEAT

catalogue number **VCTP0031\_05-P6**



### PRODUCT CHARACTERISTICS:

- made of contoured material with a coating that is easy to clean and disinfect
- easy and stable modern fixing system
- suitable for most toilets
- adjustable side clamps ensure a stable position of the overlay
- front part appropriate notch profile
- handrails/armrests to facilitate the use of the overlay



**comfortable armrests**

CE VITEA<sup>®</sup>  
CARE

Width (cm)	41
Length (cm)	43
Height (cm)	11
Hole dimensions (cm)	22 x 24
Maximum capacity (kg)	110
Armrests Height (cm)	10

## RAISED TOILET SEAT

catalogue number **VCTP0031\_05-6 - without cover**

### PRODUCT CHARACTERISTICS:

- made of contoured material with a coating that is easy to clean and disinfect
- easy and stable modern fixing system
- suitable for most toilets
- adjustable side clamps ensure a stable position of the overlay
- front part appropriate notch profile
- handrails/armrests to facilitate the use of the overlay
- available in two versions: with and without cover



CE VITEA<sup>®</sup>  
CARE

Width (cm)	35
Length (cm)	39
Height (cm)	12
Hole dimensions (cm)	22 x 29
Maximum capacity (kg)	110

## RAISED TOILET SEAT

catalogue number **VCTP0031\_05-K6 - with cover**

### PRODUCT CHARACTERISTICS:

- made of contoured material with a coating that is easy to clean and disinfect
- easy and stable modern fixing system
- suitable for most toilets
- adjustable side clamps ensure a stable position of the overlay
- front part appropriate notch profile
- handrails/armrests to facilitate the use of the overlay



Width (cm)	35
Length (cm)	39
Height (cm)	12
Hole dimensions (cm)	22 x 29
Maximum capacity (kg)	110





# EXERCISERS



**GENESIS** *exerciser*catalogue number **VCBP0011PRODUCT****CHARACTERISTICS:**

- made of steel
- equipped with resistance mechanism
- foldable
- freestanding

**USE:**

Rehabilitation and recreation, useful for patients with lower/upper limb paresis and ortopaedic diseases.



CE VITEA<sup>®</sup>  
CARE

Height (cm)	38
Width (cm)	38,5
Length (cm)	40
Weight (kg)	2,3

# GENESIS PLUS *exerciser*

catalogue number **DRVF06**

**PRODUCT CHARACTERISTICS:**

- made of steel
- equipped with resistance mechanism
- foldable
- freestanding
- equipped with calories counter

**USE:**

Rehabilitation and recreation, useful for patients with lower/upper limb paresis and orthopaedic diseases.



CE VITEA<sup>®</sup>  
CARE

Height (cm)	38
Width (cm)	38,5
Lenght (cm)	43
Weight (kg)	2,3

---

# NOTES

---

# NOTES



MDH Sp. z o.o.  
ul. Ks. W. Tymienieckiego 22/24  
90-349 Łódź  
Poland



[www.mdh.pl](http://www.mdh.pl)  
[www.viteacare.pl](http://www.viteacare.pl)



[export@mdh.pl](mailto:export@mdh.pl)